

Active Recombinant Human CLDN6 Full Length Transmembrane protein, His-tagged(VLPs)

Cat. No. CLDN6-1446H Lot. No. (See product label)

SPECIFICATION

Product Overview	Recombinant Human CLDN6 Protein(P56747)(1-220aa), fused with C-terminal His tag, was expressed in HEK293.
Species	Human
Source	HEK293
ProteinLength	1-220aa
Form	Lyophilized from a 0.2 µm filtered PBS, 6% Trehalose, pH 7.4
Bio-activity	Measured by its binding ability in a functional ELISA. Immobilized Human CLDN6 at 10 µg/mL can bind Anti-CLDN6/9 recombinant antibody, the EC50 is 1.501-2.035 ng/MI
Molecular Mass	25.1 kDa
AA Sequence	MASAGMQILGVVLTLLGWVNGLVSCALPMWKVTAFIGNSIVVAQVVWEGLWMSCV VQSTGQMCKVYDSSLALPQDLQAARALCVIALLVALFGLLVYLAGAKCTTCVEEKD SKARLVLTSGIVFVISGVLTLIPVCWTAHAIRDFYNPLVAEAQKREL GASLYLGWAAS GLLLLGGLLCCTCPSGGSQGPSHYMARYSTSAPAIRGPPSEYPTKNYV
Endotoxin	Less than 1.0 EU/ug as determined by LAL method.

 Tel: 1-631-559-9269 1-516-512-3133

 Email: info@creative-biomart.com  Fax: 1-631-938-8127

 45-1 Ramsey Road, Shirley, NY 11967, USA

Storage	Store at -20°C/-80°C upon receipt, aliquoting is necessary for mutiple use. Avoid repeated freeze-thaw cycles.
Reconstitution	Please reconstitute protein in deionized sterile water to a concentration of 0.1-1.0 mg/mL. We recommend to add 5-50% of glycerol (final concentration) and aliquot for long-term storage at -20°C/-80°C. Our default final concentration of glycerol is 50%.

GENE INFORMATION

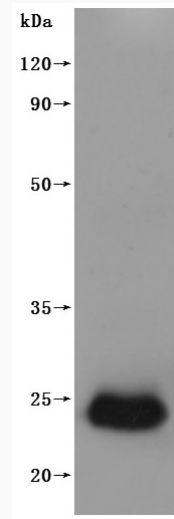
Gene Name	CLDN6 claudin 6 [Homo sapiens]
Official Symbol	CLDN6
Synonyms	CLDN6; claudin 6; claudin-6; skullin;
Gene ID	9074
mRNA Refseq	NM_021195
Protein Refseq	NP_067018
UniProt ID	P56747

 Tel: 1-631-559-9269 1-516-512-3133

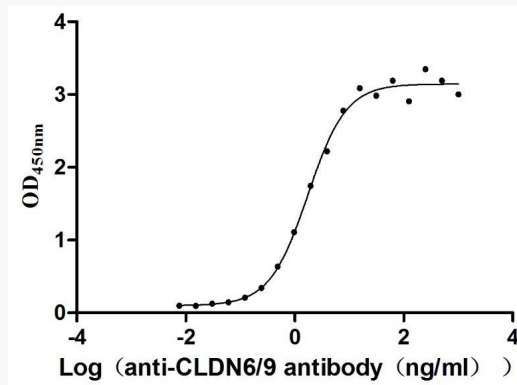
 Email: info@creative-biomart.com  Fax: 1-631-938-8127

 45-1 Ramsey Road, Shirley, NY 11967, USA

SDS-PAGE



Activity



 Tel: 1-631-559-9269 1-516-512-3133

 Email: info@creative-biomart.com  Fax: 1-631-938-8127

 45-1 Ramsey Road, Shirley, NY 11967, USA