

Recombinant Human CLDN6 Transmembrane protein (1-82 aa), His-SUMO-tagged

Cat. No. CLDN6-2711H Lot. No. (See product label)

SPECIFICATION

Product Overview	Recombinant Human CLDN6 Protein (1-82 aa) is produced by in vitro E. coli expression system. This protein is fused with a 6xHis-SUMO tag at the N-terminal.
Species	Human
Source	E.coli
ProteinLength	1-82aa
Form	If the delivery form is liquid, the default storage buffer is Tris/PBS-based buffer, 5%-50% glycerol. If the delivery form is lyophilized powder, the buffer before lyophilization is Tris/PBS-based buffer, 6% Trehalose, pH 8.0.
Molecular Mass	24.8kDa
AA Sequence	MASAGMQILGVVLTLLGWVNGLVSCALPMWKVTAFIGNSIVVAQVVWEGLWMSCV VQSTGQMCKVYDSLALPQDLQAARA
Purity	Greater than 90% as determined by SDS-PAGE.
Storage	Store at -20°C/-80°C upon receipt, aliquoting is necessary for mutiple use. Avoid repeated freeze-thaw cycles.

 Tel: 1-631-559-9269 1-516-512-3133

 Email: info@creative-biomart.com  Fax: 1-631-938-8127

 45-1 Ramsey Road, Shirley, NY 11967, USA

Reconstitution

Please reconstitute protein in deionized sterile water to a concentration of 0.1-1.0 mg/mL. We recommend to add 5-50% of glycerol (final concentration) and aliquot for long-term storage at -20°C/-80°C. Our default final concentration of glycerol is 50%.

GENE INFORMATION

Gene Name [CLDN6 claudin 6 \[Homo sapiens \]](#)

Official Symbol [CLDN6](#)

Synonyms CLDN6; claudin 6; claudin-6; skullin;

Gene ID [9074](#)

mRNA Refseq [NM_021195](#)

Protein Refseq [NP_067018](#)

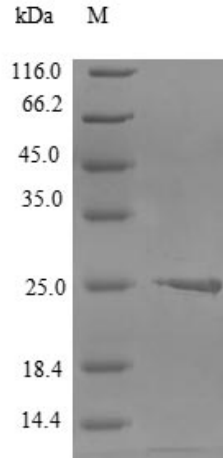
UniProt ID [P56747](#)

 Tel: 1-631-559-9269 1-516-512-3133

 Email: info@creative-biomart.com  Fax: 1-631-938-8127

 45-1 Ramsey Road, Shirley, NY 11967, USA

SDS-PAGE



 Tel: 1-631-559-9269 1-516-512-3133

 Email: info@creative-biomart.com  Fax: 1-631-938-8127

 45-1 Ramsey Road, Shirley, NY 11967, USA