

Active Recombinant Full Length Human CLDN6 Protein

Cat. No. CLDN6-31H Lot. No. (See product label)

SPECIFICATION

Product Overview	Claudin 6 contains 220 amino acids (Met1-Val220; UniProt# P56747), and is displayed on nanoparticles that mimics the native protein conformation on the cell surface.
Species	Human
Source	HEK293T
ProteinLength	1-220 aa
Description	Claudin 6, also known as CLDN6, is an integral membrane protein with 4 transmembrane domains, two extracellular loops, two intracellular loops, both N-terminus and C-terminus ends towards the cytosol. Human Claudin 6 is a member of Claudin protein family and involved in tight junction and cell-to-cell adhesion. It is highly and widely expressed on various tumor cells, and play critical role in cancer initiation and progression, and a promising target for cancer therapeutics.
Application	Verified Applications: ELISA for Claudin-6 specific antibody binding assays; animal immunization, RUO.
Storage	Store at -80 centigrade.
Storage Buffer	0.22µm filtered PBS, pH 7.4
Shipping	Frozen Dry Ice

 Tel: 1-631-559-9269 1-516-512-3133

 Email: info@creative-biomart.com  Fax: 1-631-938-8127

 45-1 Ramsey Road, Shirley, NY 11967, USA

GENE INFORMATION

Gene Name CLDN6 claudin 6 [Homo sapiens (human)]

Official Symbol CLDN6

Synonyms CLDN6; claudin 6; claudin-6; skullin;

Gene ID 9074

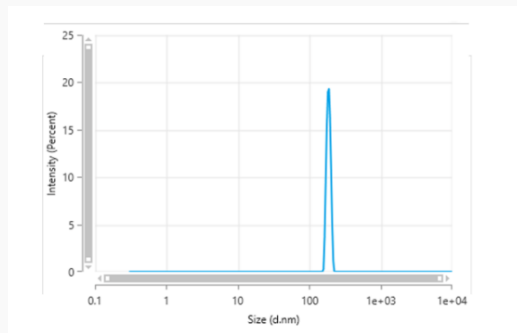
mRNA Refseq NM_021195

Protein Refseq NP_067018

MIM 615798

UniProt ID P56747

Dynamic Light Scattering



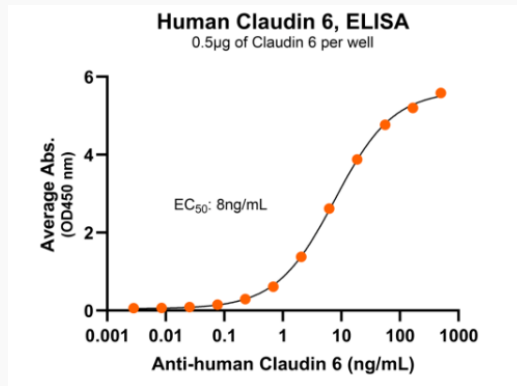
The mean peak diameter (nm) of the CMP is 177.6 with a range of 162.9-196.6 with more than 95% intensity as determined by dynamic light scattering (DLS).

 Tel: 1-631-559-9269 1-516-512-3133

 Email: info@creative-biomart.com  Fax: 1-631-938-8127

 45-1 Ramsey Road, Shirley, NY 11967, USA

**Bioactivity-Antibody
Binding**



Immobilized human Claudin 6 VLP at 5 µg/mL (100 µL/well) can bind monoclonal anti-human Claudin 6 antibody with half maximal effective concentration (EC₅₀) range of 6.6 – 26.3 ng/mL (QC tested).

 Tel: 1-631-559-9269 1-516-512-3133

 Email: info@creative-biomart.com  Fax: 1-631-938-8127

 45-1 Ramsey Road, Shirley, NY 11967, USA