

Recombinant Mouse CLDN6 Full Length Transmembrane protein(VLPs)

Cat. No. CLDN6-4765M **Lot. No.** (See product label)

SPECIFICATION

Product Overview	Recombinant Mouse CLDN6 Full Length Transmembrane protein(VLPs)(Q9Z262)(Met1-Val219) was expressed in HEK293.
Species	Mouse
Source	HEK293
ProteinLength	Met1-Val219
Tag	Non
Form	Supplied as 0.22um filtered solution in PBS, 300mM L-Arginine (pH 7.4).
Bio-activity	Immobilized Mouse Claudin 6 VLP at 5ug/ml (100ul/Well) on the plate. Dose response curve for Anti-Claudin6 Antibody, mFc Tag with the EC50 of 3.3ng/ml determined by ELISA.
Molecular Mass	The target protein has a predicted MW of 24.60 kDa.
Endotoxin	Less than 1EU per ug by the LAL method.
Purity	> 95% as determined by HPLC
Storage	Valid for 12 months from date of receipt when stored at -80°C.; Recommend to

 Tel: 1-631-559-9269 1-516-512-3133

 Email: info@creative-biomart.com  Fax: 1-631-938-8127

 45-1 Ramsey Road, Shirley, NY 11967, USA

aliquot the protein into smaller quantities for optimal storage. Please minimize freeze-thaw cycles.

Reconstitution

It is recommended that sterile water be added to the vial to prepare a stock solution of 0.2 ug/ul. Centrifuge the vial at 4°C before opening to recover the entire contents.

GENE INFORMATION

Gene Name Cldn6 claudin 6 [*Mus musculus*]

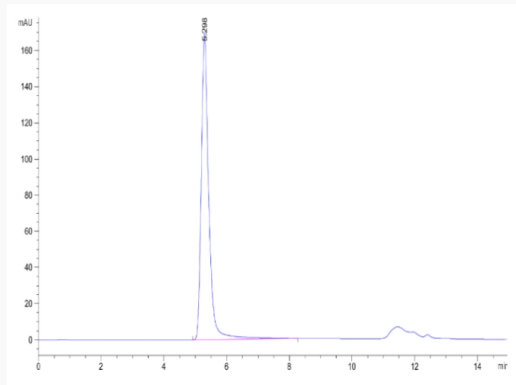
Official Symbol CLDN6

Synonyms CLDN6; claudin 6; claudin-6; skullin; tight junction molecule claudin 6; AL024037;

Gene ID 54419

mRNA Refseq NM_018777

Protein Refseq NP_061247

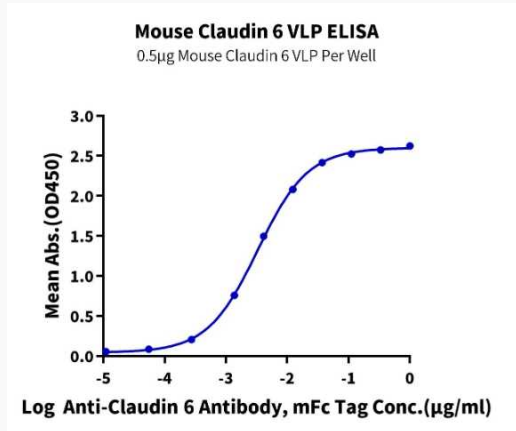
SEC-HPLC


 Tel: 1-631-559-9269 1-516-512-3133

 Email: info@creative-biomart.com  Fax: 1-631-938-8127

 45-1 Ramsey Road, Shirley, NY 11967, USA

Activity



 Tel: 1-631-559-9269 1-516-512-3133

 Email: info@creative-biomart.com  Fax: 1-631-938-8127

 45-1 Ramsey Road, Shirley, NY 11967, USA