

Active Recombinant Human CLDN6 Full Length Transmembrane protein(VLPs), Biotinylated

Cat. No. CLDN6-8614H Lot. No. (See product label)

SPECIFICATION

Product Overview	Biotinylated Active Recombinant Human CLDN6 Full Length Transmembrane protein(VLPs)(P56747)(Met1-Val220) is expressed from HEK293.
Species	Human
Source	HEK293
ProteinLength	Met1-Val220
Form	Supplied as 0.22µm filtered solution in PBS (pH 7.4).
Bio-activity	Biotinylated Human Claudin 6 VLP captured on CM5 Chip via Streptavidin can bind Anti-Claudin6 Antibody with an affinity constant of 0.65 nM as determined in SPR assay (Biacore T200).
Molecular Mass	The target protein has a predicted MW of 24.5 kDa.
Endotoxin	Less than 1EU per µg by the LAL method.
Purity	> 95% as determined by HPLC
Storage	Valid for 12 months from date of receipt when stored at -80°C. Recommend to aliquot the protein into smaller quantities for optimal storage. Please minimize freeze-thaw cycles.

 Tel: 1-631-559-9269 1-516-512-3133

 Email: info@creative-biomart.com  Fax: 1-631-938-8127

 45-1 Ramsey Road, Shirley, NY 11967, USA

Reconstitution It is recommended that sterile water be added to the vial to prepare a stock solution of 0.2 ug/ul. Centrifuge the vial at 4°C before opening to recover the entire contents.

Conjugation Biotin

GENE INFORMATION

Gene Name CLDN6 claudin 6 [Homo sapiens]

Official Symbol CLDN6

Synonyms CLDN6; claudin 6; claudin-6; skullin;

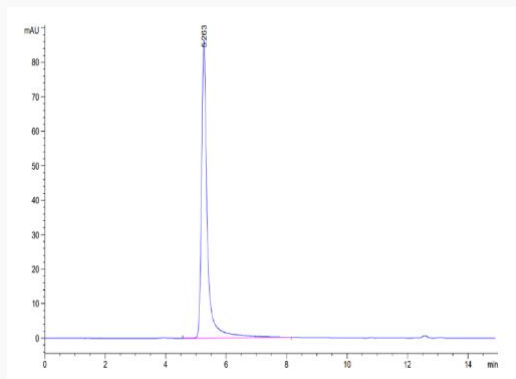
Gene ID 9074

mRNA Refseq NM_021195

Protein Refseq NP_067018

UniProt ID P56747

SEC-HPLC



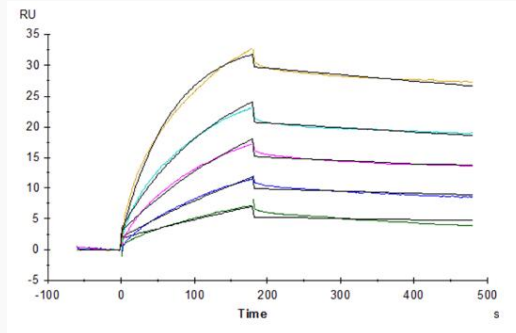
 Tel: 1-631-559-9269 1-516-512-3133

 Email: info@creative-biomart.com  Fax: 1-631-938-8127

 45-1 Ramsey Road, Shirley, NY 11967, USA



SPR Data



Tel: 1-631-559-9269 1-516-512-3133

Email: info@creative-biomart.com Fax: 1-631-938-8127

45-1 Ramsey Road, Shirley, NY 11967, USA