

## Active Recombinant Mouse CLDN6 Full Length Transmembrane protein(VLPs)

Cat. No. CLDN6-861M Lot. No. (See product label)

### SPECIFICATION

<b>Product Overview</b>	Active Recombinant Mouse CLDN6 Full Length Transmembrane protein(VLPs)(Q9Z262)(Met1-Val219) is expressed from HEK293.
<b>Species</b>	Mouse
<b>Source</b>	HEK293
<b>ProteinLength</b>	Met1-Val219
<b>Form</b>	Supplied as 0.22µm filtered solution in PBS (pH 7.4).
<b>Bio-activity</b>	Immobilized Mouse Claudin 6 VLP at 5µg/ml (100µl/Well) on the plate. Dose response curve for Anti-Claudin6 Antibody, mFc Tag with the EC50 of 6.6ng/ml determined by ELISA.
<b>Molecular Mass</b>	The target protein has a predicted MW of 24.60 kDa.
<b>Endotoxin</b>	Less than 1EU per µg by the LAL method.
<b>Purity</b>	> 95% as determined by HPLC
<b>Storage</b>	Valid for 12 months from date of receipt when stored at -80°C. Recommend to aliquot the protein into smaller quantities for optimal storage. Please minimize freeze-thaw cycles.

 Tel: 1-631-559-9269 1-516-512-3133

 Email: [info@creative-biomart.com](mailto:info@creative-biomart.com)  Fax: 1-631-938-8127

 45-1 Ramsey Road, Shirley, NY 11967, USA

**Reconstitution** It is recommended that sterile water be added to the vial to prepare a stock solution of 0.2 ug/ul. Centrifuge the vial at 4°C before opening to recover the entire contents.

## GENE INFORMATION

**Gene Name** [Cldn6 claudin 6 \[ Mus musculus \]](#)

**Official Symbol** [CLDN6](#)

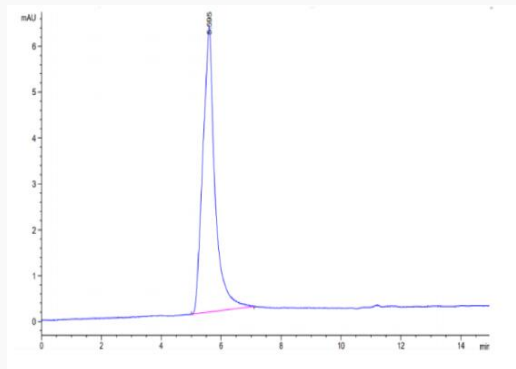
**Synonyms** CLDN6; claudin 6; claudin-6; skullin; tight junction molecule claudin 6; AL024037;

**Gene ID** [54419](#)

**mRNA Refseq** [NM\\_018777](#)

**Protein Refseq** [NP\\_061247](#)

## SEC-HPLC



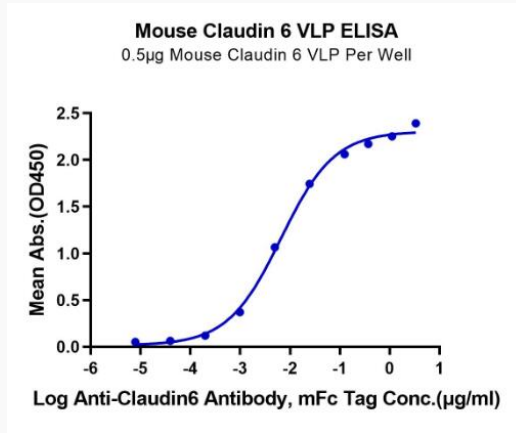
 Tel: 1-631-559-9269 1-516-512-3133

 Email: [info@creative-biomart.com](mailto:info@creative-biomart.com)  Fax: 1-631-938-8127

 45-1 Ramsey Road, Shirley, NY 11967, USA



ELISA Data



Tel: 1-631-559-9269 1-516-512-3133

Email: [info@creative-biomart.com](mailto:info@creative-biomart.com) Fax: 1-631-938-8127

45-1 Ramsey Road, Shirley, NY 11967, USA