

Active Recombinant Rhesus monkey/Cynomolgus Claudin 6 Protein-VLP

Cat. No. CLDN6-897R **Lot. No.** (See product label)

SPECIFICATION

Product Overview	Recombinant Rhesus monkey/Cynomolgus Claudin 6 Protein-VLP(G7Q0B0)(Met1-Val220) is expressed from Expi293.
Species	Cynomolgus/Rhesus macaque
Source	HEK293
ProteinLength	Met1-Val220
Form	Supplied as 0.22µm filtered solution in PBS (pH 7.4). Please dilute to the desired concentration according to the concentration of the solution shown on the product label.
Bio-activity	Immobilized Cynomolgus Claudin 6 VLP at 5µg/ml (100µl/Well) on the plate. Dose response curve for Anti-Claudin6 Antibody, mFc Tag with the EC50 of 4ng/ml determined by ELISA.
Molecular Mass	The protein has a predicted MW of 24.60 kDa.
Endotoxin	Less than 1EU per µg by the LAL method.
Purity	> 95% as determined by HPLC
Storage	Valid for 12 months from date of receipt when stored at -80°C.

 Tel: 1-631-559-9269 1-516-512-3133

 Email: info@creative-biomart.com  Fax: 1-631-938-8127

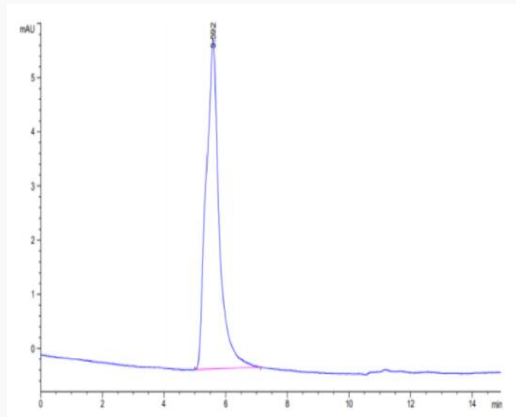
 45-1 Ramsey Road, Shirley, NY 11967, USA

Recommend to aliquot the protein into smaller quantities for optimal storage. Please do not repeated freeze-thaw cycles.

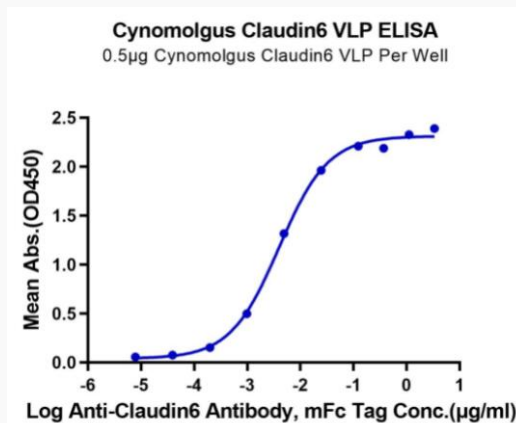
Reconstitution

It is recommended that sterile water be added to the vial to prepare a stock solution of 0.2 ug/ul. Centrifuge the vial at 4°C before opening to recover the entire contents.

SEC-HPLC



ELISA Data



Tel: 1-631-559-9269 1-516-512-3133

Email: info@creative-biomart.com Fax: 1-631-938-8127

45-1 Ramsey Road, Shirley, NY 11967, USA