

Recombinant Human CLDN7 Protein, GST-tagged

Cat. No. CLDN7-1446H Lot. No. (See product label)

SPECIFICATION

Product Overview Human CLDN7 full-length ORF (NP_001298.2, 1 a.a. - 211 a.a.) recombinant protein with GST-tag at N-terminal.

Species Human

Source Wheat Germ

Description This gene encodes a member of the claudin family. Claudins are integral membrane proteins and components of tight junction strands. Tight junction strands serve as a physical barrier to prevent solutes and water from passing freely through the paracellular space between epithelial or endothelial cell sheets, and also play critical roles in maintaining cell polarity and signal transductions. Differential expression of this gene has been observed in different types of malignancies, including breast cancer, ovarian cancer, hepatocellular carcinomas, urinary tumors, prostate cancer, lung cancer, head and neck cancers, thyroid carcinomas, etc.. Alternatively spliced transcript variants encoding different isoforms have been found.[provided by RefSeq, May 2010]

Molecular Mass 48.8 kDa

AA Sequence
MANSGLQLLGFSMALLGWVGLVACTAIPQWQMSSYAGDNIITAQAMYKGLWMDCV
TQSTGMMSCKMYDSVLALSALQATRALMVVSLVLGFLAMFVATMGMKCTRCCGD
DKVKKARIAMGGGIIFIVAGLATLVACSWYGHQIVTDFYNPLIPTNIKYEFGPAIFIGWA
GSALVILGGALLSCSCPGNESKAGYRAPRSYPKSNSSKEYV

 Tel: 1-631-559-9269 1-516-512-3133

 Email: info@creative-biomart.com  Fax: 1-631-938-8127

 45-1 Ramsey Road, Shirley, NY 11967, USA



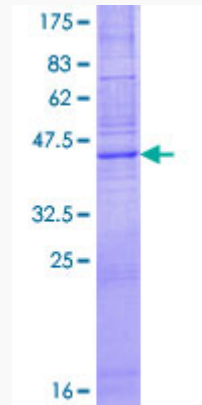
Applications	Enzyme-linked Immunoabsorbent Assay Western Blot (Recombinant protein) Antibody Production Protein Array
Notes	Best use within three months from the date of receipt of this protein.
Storage	Store at -80 centigrade. Aliquot to avoid repeated freezing and thawing.
Storage Buffer	50 mM Tris-HCl, 10 mM reduced Glutathione, pH=8.0 in the elution buffer.

GENE INFORMATION

Gene Name	CLDN7 claudin 7 [Homo sapiens]
Official Symbol	CLDN7
Synonyms	CLDN7; claudin 7; CEPTL2, CPETL2; claudin-7; Hs.84359; clostridium perfringens enterotoxin receptor-like 2; CLDN-7; CEPTL2; CPETL2; claudin-1;
Gene ID	1366
mRNA Refseq	NM_001185022
Protein Refseq	NP_001171951
MIM	609131
UniProt ID	O95471

Quality Control

Testing:



12.5% SDS-PAGE Stained with Coomassie Blue.

 Tel: 1-631-559-9269 1-516-512-3133

 Email: info@creative-biomart.com  Fax: 1-631-938-8127

 45-1 Ramsey Road, Shirley, NY 11967, USA