

Recombinant Human CLDN8 Protein, GST-tagged

Cat. No. CLDN8-1448H Lot. No. (See product label)

SPECIFICATION

Product Overview Human CLDN8 full-length ORF (NP_955360.1, 1 a.a. - 225 a.a.) recombinant protein with GST-tag at N-terminal.

Species Human

Source Wheat Germ

Description This gene encodes a member of the claudin family. Claudins are integral membrane proteins and components of tight junction strands. Tight junction strands serve as a physical barrier to prevent solutes and water from passing freely through the paracellular space between epithelial or endothelial cell sheets, and also play critical roles in maintaining cell polarity and signal transductions. This protein plays important roles in the paracellular cation barrier of the distal renal tubule, and in the paracellular barrier to prevent sodium back-leakage in distal colon. Differential expression of this gene has been observed in colorectal carcinoma and renal cell tumors, and along with claudin-7, is an immunohistochemical marker for the differential diagnosis of chromophobe renal cell carcinoma and renal oncocytoma.[provided by RefSeq, May 2010]

Molecular Mass 51.2 kDa

AA Sequence MATHALEIAGLFLGGVGMVGTVAVTVMQPQWRVSAFIENNIVVFENFWEGLWMNCV
RQANIRMQCKIYDSSLALSPDLQAARGLMCAASVMSFLAFMMAILGMKCTRCTGDN
EKVKAHILLTAGIIFIITGMVVLIPVSWVANAIIRDFYNSIVNVAQKRELGEALYLGWTTA

 Tel: 1-631-559-9269 1-516-512-3133

 Email: info@creative-biomart.com  Fax: 1-631-938-8127

 45-1 Ramsey Road, Shirley, NY 11967, USA

LVLIVGGALFCCVFCCNEKSSSYRYSIPSHRTTQKSYHTGKKSPSVYSRSQYV

Applications

Enzyme-linked Immunoabsorbent Assay
 Western Blot (Recombinant protein)
 Antibody Production
 Protein Array

Notes

Best use within three months from the date of receipt of this protein.

Storage

Store at -80 centigrade. Aliquot to avoid repeated freezing and thawing.

Storage Buffer

50 mM Tris-HCl, 10 mM reduced Glutathione, pH=8.0 in the elution buffer.

GENE INFORMATION

Gene Name

CLDN8 claudin 8 [Homo sapiens]

Official Symbol

CLDN8

Synonyms

CLDN8; claudin 8; claudin-8;

Gene ID

9073

mRNA Refseq

NM_199328

Protein Refseq

NP_955360

MIM

611231

UniProt ID

P56748

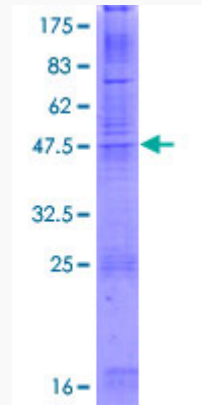
 Tel: 1-631-559-9269 1-516-512-3133

 Email: info@creative-biomart.com  Fax: 1-631-938-8127

 45-1 Ramsey Road, Shirley, NY 11967, USA

Quality Control

Testing:



12.5% SDS-PAGE Stained with Coomassie Blue.

 Tel: 1-631-559-9269 1-516-512-3133

 Email: info@creative-biomart.com  Fax: 1-631-938-8127

 45-1 Ramsey Road, Shirley, NY 11967, USA