

# Recombinant Human CLDN9 Protein, Myc/DDK-tagged, C13 and N15-labeled

Cat. No. CLDN9-1074H Lot. No. (See product label)

## SPECIFICATION

### Product Overview

CLDN9 MS Standard C13 and N15-labeled recombinant protein (NP\_066192) with a C-terminal MYC/DDK tag, was expressed in HEK293 cells.

### Species

Human

### Source

HEK293

### Description

This gene encodes a member of the claudin family. Claudins are integral membrane proteins and components of tight junction strands. Tight junction strands serve as a physical barrier to prevent solutes and water from passing freely through the paracellular space between epithelial or endothelial cell sheets, and also play critical roles in maintaining cell polarity and signal transductions. This protein is one of the entry cofactors for hepatitis C virus. Mouse studies revealed that this gene is required for the preservation of sensory cells in the hearing organ and the gene deficiency is associated with deafness.

### Molecular Mass

22.8 kDa

### AA Sequence

MASTGLELLGMTLAVLGWLGTLVSCALPLWKVTAFIGNSIVVAQVVWEGLWMSCVV  
QSTGQMCKVYDSSLALPQDLQAARALCVIALLLALLGLLVAITGAQCTTCVEDEGA  
KARIVLTAGVILLLAGILVLIPVCWTAHAIQDFYNPLVAEALKRELGASLYLGWAAAAL  
LMLGGLLCCTCPPPQVERPRGPRLGYSIPSRSGASGLDKRDYVTRTRPLEQKLISE  
EDLAANDILDYKDDDDKV

Tel: 1-631-559-9269 1-516-512-3133

Email: [info@creative-biomart.com](mailto:info@creative-biomart.com) Fax: 1-631-938-8127

45-1 Ramsey Road, Shirley, NY 11967, USA

<b>Purity</b>	> 80% as determined by SDS-PAGE and Coomassie blue staining
<b>Stability</b>	Stable for 3 months from receipt of products under proper storage and handling conditions.
<b>Storage</b>	Store at -80 centigrade. Avoid repeated freeze-thaw cycles.
<b>Concentration</b>	50 µg/mL as determined by BCA
<b>Storage Buffer</b>	100 mM glycine, 25 mM Tris-HCl, pH 7.3.

## GENE INFORMATION

<b>Gene Name</b>	CLDN9 claudin 9 [ Homo sapiens (human) ]
<b>Official Symbol</b>	CLDN9
<b>Synonyms</b>	CLDN9; claudin 9; DFNB116
<b>Gene ID</b>	9080
<b>mRNA Refseq</b>	NM_020982
<b>Protein Refseq</b>	NP_066192
<b>MIM</b>	615799
<b>UniProt ID</b>	O95484

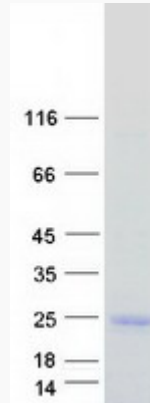
 Tel: 1-631-559-9269 1-516-512-3133

 Email: [info@creative-biomart.com](mailto:info@creative-biomart.com)  Fax: 1-631-938-8127

 45-1 Ramsey Road, Shirley, NY 11967, USA



SDS-PAGE



Tel: 1-631-559-9269 1-516-512-3133

Email: [info@creative-biomart.com](mailto:info@creative-biomart.com) Fax: 1-631-938-8127

45-1 Ramsey Road, Shirley, NY 11967, USA