

## Active Recombinant Human CLDN9 Full Length protein, Histagged(VLPs), R-PE labeled

Cat. No. CLDN9-12HP Lot. No. (See product label)

### SPECIFICATION

#### Product Overview

Recombinant Human CLDN9 Full Length protein(O95484)(1-217aa)(VLPs), fused with His tag, was expressed in HEK293. Protein was labeled with R-PE in vitro.

#### Species

Human

#### Source

HEK293

#### ProteinLength

1-217aa

#### Description

This gene encodes a member of the claudin family. Claudins are integral membrane proteins and components of tight junction strands. Tight junction strands serve as a physical barrier to prevent solutes and water from passing freely through the paracellular space between epithelial or endothelial cell sheets, and also play critical roles in maintaining cell polarity and signal transductions. This protein is one of the entry cofactors for hepatitis C virus. Mouse studies revealed that this gene is required for the preservation of sensory cells in the hearing organ and the gene deficiency is associated with deafness.

#### Form

PBS buffer

#### Bio-activity

Measured by its binding ability in a functional ELISA. Immobilized Human CLDN4 at 5µg/mL can bind Anti-CLDN4 recombinant antibody, the EC50 is 29.56-50.75 ng/mL.

#### Molecular Mass

24.2 kDa

 Tel: 1-631-559-9269 1-516-512-3133

 Email: [info@creative-biomart.com](mailto:info@creative-biomart.com)  Fax: 1-631-938-8127

 45-1 Ramsey Road, Shirley, NY 11967, USA

|                         |  |
|-------------------------|--|
| <b>AA Sequence</b>      | <p>MASTGLELLG MTLAVLGWLG TLVSCALPLW KVTAFIGNSI VVAQVVWEGL<br/>         WMSCVVQSTG QMQCKVYDSL LALPQDLQAA RALCVIALLL ALLGLLVAIT<br/>         GAQCTTCVED EGAKARIVLT AGVILLLAGI LVLIPVCWTA HAIQDFYNP<br/>         LVAEALKREL GASLYLGWAA AALLMLGGGL LCCTCPPPQV ERPRGPRLGY<br/>         SIPSRSGASG LDKRDYV</p> |
| <b>Endotoxin</b>        | Less than 1.0 EU/ug as determined by LAL method.   |
| <b>Storage</b>          | Store at -20 centigrade upon receipt, aliquoting is necessary for mutiple use. Avoid repeated freeze-thaw cycles.  |
| <b>Concentration</b>    | 0.83 mg/mL   |
| <b>Conjugation</b>      | R-PE   |
| <b>GENE INFORMATION</b> |  |
| <b>Gene Name</b>        | CLDN9 claudin 9 [ Homo sapiens (human) ]   |
| <b>Official Symbol</b>  | CLDN9  |
| <b>Synonyms</b>         | DFNB116; claudin 9; claudin-9  |
| <b>Gene ID</b>          | 9080   |
| <b>mRNA Refseq</b>      | NM_020982.4  |
| <b>Protein Refseq</b>   | NP_066192.1  |
| <b>MIM</b>              | 615799   |

 Tel: 1-631-559-9269 1-516-512-3133

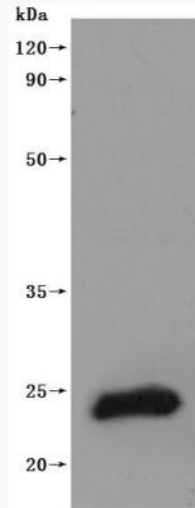
 Email: [info@creative-biomart.com](mailto:info@creative-biomart.com)  Fax: 1-631-938-8127

 45-1 Ramsey Road, Shirley, NY 11967, USA

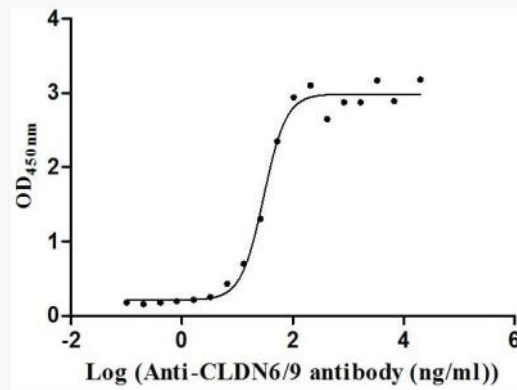
UniProt ID

O95484

SDS-PAGE



Bio-activity



Tel: 1-631-559-9269 1-516-512-3133

Email: [info@creative-biomart.com](mailto:info@creative-biomart.com) Fax: 1-631-938-8127

45-1 Ramsey Road, Shirley, NY 11967, USA