

Active Recombinant Full Length Human CLDN9 Protein

Cat. No. CLDN9-32H Lot. No. (See product label)

SPECIFICATION

Product Overview Claudin 9 protein contains 217 amino acids (Met1-Val217; UniProt# O95484), and is displayed on nanoparticles that mimics the native protein conformation on the cell surface.

Species Human

Source HEK293T

ProteinLength 1-217 aa

Description Claudin 9, also known as Claudin-9 and CLDN9, is an integral membrane protein with 4 transmembrane domains, two extracellular loops, one intracellular loop, and both N-terminus and C-terminus ends towards the cytosol. Human Claudin 9 is a member of the Claudin protein family, involved with tight junctions and cell-to-cell adhesion. Claudin 9 is expressed at low levels in normal tissue, but is ectopically expressed in numerous cancers. Claudin 9 is a novel prognostic biomarker for endometrial cancer and also functions as a co-receptor for Hepatitis C Virus.

Application Verified Applications: ELISA and Western blot for Claudin 9 specific antibody binding assays. Suggested Applications: BLI, SPR and animal immunization, RUO.

Storage Store at -80 centigrade.

Storage Buffer 0.22µm filtered PBS, pH 7.4

 Tel: 1-631-559-9269 1-516-512-3133

 Email: info@creative-biomart.com  Fax: 1-631-938-8127

 45-1 Ramsey Road, Shirley, NY 11967, USA

Shipping Frozen Dry Ice

GENE INFORMATION

Gene Name CLDN9 claudin 9 [Homo sapiens (human)]

Official Symbol CLDN9

Synonyms CLDN9; claudin 9; claudin-9;

Gene ID 9080

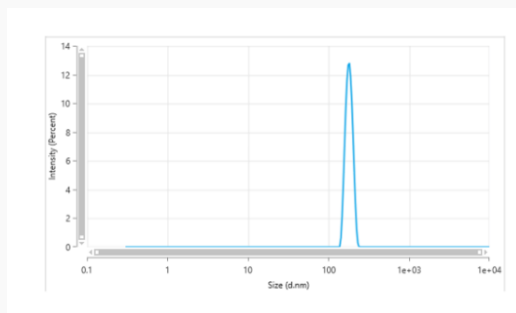
mRNA Refseq NM_020982

Protein Refseq NP_066192

MIM 615799

UniProt ID O95484

Dynamic Light Scattering



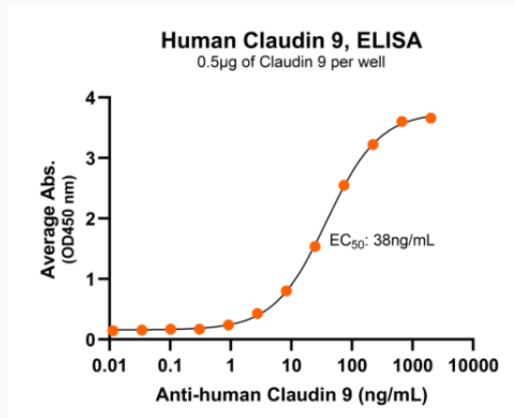
The mean peak diameter (nm) of the CMP is 183 with a range of 165.6-202.4 with more than 95% intensity as determined by dynamic light scattering (DLS).

 Tel: 1-631-559-9269 1-516-512-3133

 Email: info@creative-biomart.com  Fax: 1-631-938-8127

 45-1 Ramsey Road, Shirley, NY 11967, USA

Bioactivity-Antibody Binding



Immobilized human Claudin 9 VLP at 5 µg/mL (100 µL/well) can bind monoclonal anti-human Claudin 9 antibody with half maximal effective concentration (EC₅₀) range of 18.6 to 74.4 ng/mL (QC tested).

Tel: 1-631-559-9269 1-516-512-3133

Email: info@creative-biomart.com Fax: 1-631-938-8127

45-1 Ramsey Road, Shirley, NY 11967, USA