

Recombinant Full Length Human CLDN9 Protein, C-Flag-tagged

Cat. No. CLDN9-710HFL **Lot. No.** (See product label)

SPECIFICATION

Product Overview	Recombinant Full Length Human CLDN9 Protein, fused to Flag-tag at C-terminus, was expressed in Mammalian cells.
Species	Human
Source	Mammalian Cells
Description	This gene encodes a member of the claudin family. Claudins are integral membrane proteins and components of tight junction strands. Tight junction strands serve as a physical barrier to prevent solutes and water from passing freely through the paracellular space between epithelial or endothelial cell sheets, and also play critical roles in maintaining cell polarity and signal transductions. This protein is one of the entry cofactors for hepatitis C virus. Mouse studies revealed that this gene is required for the preservation of sensory cells in the hearing organ and the gene deficiency is associated with deafness.
Form	25 mM Tris HCl, pH 7.3, 100 mM glycine, 10% glycerol.
Molecular Mass	22.7 kDa
AA Sequence	MASTGLELLGMTLAVLGWLGTLVSCALPLWKVTAFIGNSIVVAQVVWEGLWMSCVV QSTGQMCKVYDSL LALPQDLQAARALCVIALLLALLGLLVAITGAQCTTCVEDEGA KARIVLTAGVILLLAGILVLIPVCWTA HAIQDFYNPLVAEALKRELGASLYLGWAAAAL LMLGGLLCCTCPPPQVERPRGPRLGYSIPSRSGASG

 Tel: 1-631-559-9269 1-516-512-3133

 Email: info@creative-biomart.com  Fax: 1-631-938-8127

 45-1 Ramsey Road, Shirley, NY 11967, USA

LDKRDYVTRTRPLEQKLISEEDLAANDILDYKDDDDKV

Purity > 80% as determined by SDS-PAGE and Coomassie blue staining.

Stability Stable for 12 months from the date of receipt of the product under proper storage and handling conditions. Avoid repeated freeze-thaw cycles.

Storage Store at -80 centigrade.

Concentration >50 ug/mL as determined by microplate BCA method.

Preparation Recombinant protein was captured through anti-DDK affinity column followed by conventional chromatography steps.

Protein Families Transmembrane

Protein Pathways Cell adhesion molecules (CAMs), Leukocyte transendothelial migration, Tight junction

Full Length Full L.

GENE INFORMATION

Gene Name [CLDN9 claudin 9 \[Homo sapiens \(human\) \]](#)

Official Symbol [CLDN9](#)

Synonyms [DFNB116](#)

Gene ID [9080](#)

mRNA Refseq [NM_020982.4](#)

 Tel: 1-631-559-9269 1-516-512-3133

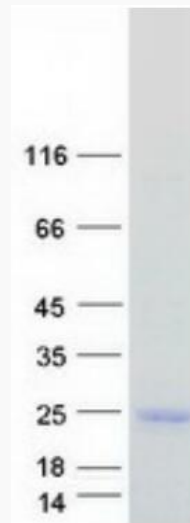
 Email: info@creative-biomart.com  Fax: 1-631-938-8127

 45-1 Ramsey Road, Shirley, NY 11967, USA

Protein Refseq NP_066192.1

MIM 615799

UniProt ID O95484



Coomassie blue staining of purified CLDN9 protein.

 Tel: 1-631-559-9269 1-516-512-3133

 Email: info@creative-biomart.com  Fax: 1-631-938-8127

 45-1 Ramsey Road, Shirley, NY 11967, USA