

Recombinant Human CLEC10A Protein, His-tagged

Cat. No. CLEC10A-009H Lot. No. (See product label)

SPECIFICATION

Product Overview	Recombinant Human CLEC10A Protein with His tag was expressed in E. coli.
Species	Human
Source	E.coli
Description	Probable role in regulating adaptive and innate immune responses. Binds in a calcium-dependent manner to terminal galactose and N-acetylgalactosamine units, linked to serine or threonine. These sugar moieties are known as Tn-Ag and are expressed in a variety of carcinoma cells.
Molecular Mass	~30 kDa
AA Sequence	QNSKFQRDLVTLRDTFSNFTSNTVAEIQALTSQGSSLEETIASLKAEEVGFKQERQA GVSELQEHTTQKAHLGHCPHCPVSVCPVHSEMILLRVQQLVQDLKLLTCQVATLNN NASTEGTCCPVNWWVEHQDSCYWFSHSGMSWAEAEKYCQLKNAHLVVINSREEQN FVQKYLGSAYTWMGLSDPEGAWKWDGTDYATGFQNWKPGQPDDWQGHGLGG GEDCAHFHPDGRWNDDVCQRPYHWVCEAGLGQTSQESH
Purity	Transferred into competent cells and the supernatant was purified by NI column affinity chromatography and the purity is > 85% (by SDS-PAGE).
Notes	For research use only, not for use in diagnostic procedure.
Storage	Store at 4 centigrade short term. Aliquot and store at -20 centigrade long term. Avoid

 Tel: 1-631-559-9269 1-516-512-3133

 Email: info@creative-biomart.com  Fax: 1-631-938-8127

 45-1 Ramsey Road, Shirley, NY 11967, USA

freeze-thaw cycles.

Storage Buffer PBS, 4M Urea, pH7.4

GENE INFORMATION

Gene Name [CLEC10A C-type lectin domain family 10, member A \[Homo sapiens \(human\) \]](#)

Official Symbol [CLEC10A](#)

Synonyms

CLEC10A; C-type lectin domain family 10, member A; C type (calcium dependent, carbohydrate recognition domain) lectin, superfamily member 14 (macrophage derived) , CLECSF13, CLECSF14; C-type lectin domain family 10 member A; CD301; HML; HML2; macrophage lectin 2 (calcium dependent); C-type (calcium dependent, carbohydrate-recognition domain) lectin, superfamily member 13 (macrophage-derived); C-type (calcium dependent, carbohydrate-recognition domain) lectin, superfamily member 14 (macrophage-derived); MGL; CLECSF13; CLECSF14;

Gene ID [10462](#)

mRNA Refseq [NM_006344](#)

Protein Refseq [NP_006335](#)

MIM [605999](#)

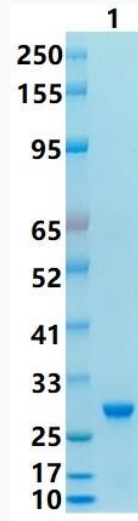
UniProt ID [Q8IUN9](#)

 Tel: 1-631-559-9269 1-516-512-3133

 Email: info@creative-biomart.com  Fax: 1-631-938-8127

 45-1 Ramsey Road, Shirley, NY 11967, USA

SDS-PAGE



 Tel: 1-631-559-9269 1-516-512-3133

 Email: info@creative-biomart.com  Fax: 1-631-938-8127

 45-1 Ramsey Road, Shirley, NY 11967, USA