

# Recombinant Human CLEC10A Protein (Thr71-Met239), N-His tagged

Cat. No. CLEC10A-0935H    Lot. No. (See product label)

## SPECIFICATION

<b>Product Overview</b>	Recombinant Human CD301/CLEC10A (Thr71-Met239) fused with the N-His tag was expressed in E. coli.
<b>Species</b>	Human
<b>Source</b>	E.coli
<b>ProteinLength</b>	Thr71-Met239
<b>Form</b>	Lyophilized powder/frozen liquid
<b>Molecular Mass</b>	21.30 kDa
<b>Purity</b>	>90% as determined by SDS-PAGE.
<b>Notes</b>	For research use only.
<b>Storage</b>	Use a manual defrost freezer and avoid repeated freeze thaw cycles. Store at 2 to 8 centigrade for one week. Store at -20 to -80 centigrade for twelve months from the date of receipt.
<b>Storage Buffer</b>	0.01M PBS, pH 7.4, 0.02% NLS
<b>Reconstitution</b>	Reconstitute in sterile water for a stock solution.

 Tel: 1-631-559-9269    1-516-512-3133

 Email: [info@creative-biomart.com](mailto:info@creative-biomart.com)     Fax: 1-631-938-8127

 45-1 Ramsey Road, Shirley, NY 11967, USA

**Shipping** They are shipped out with dry ice/blue ice unless customers require otherwise.

## GENE INFORMATION

**Gene Name** [CLEC10A C-type lectin domain family 10, member A \[ Homo sapiens \(human\) \]](#)

**Official Symbol** [CLEC10A](#)

**Synonyms** CLEC10A; C-type lectin domain family 10, member A; C type (calcium dependent, carbohydrate recognition domain) lectin, superfamily member 14 (macrophage derived), CLECSF13, CLECSF14; C-type lectin domain family 10 member A; CD301; HML; HML2; macrophage lectin 2 (calcium dependent); C-type (calcium dependent, carbohydrate-recognition domain) lectin, superfamily member 13 (macrophage-derived); C-type (calcium dependent, carbohydrate-recognition domain) lectin, superfamily member 14 (macrophage-derived); MGL; CLECSF13; CLECSF14;

**Gene ID** [10462](#)

**mRNA Refseq** [NM\\_006344](#)

**Protein Refseq** [NP\\_006335](#)

**MIM** [605999](#)

**UniProt ID** [Q8IUN9](#)

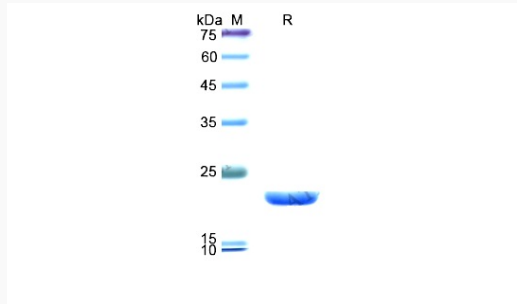
 Tel: 1-631-559-9269 1-516-512-3133

 Email: [info@creative-biomart.com](mailto:info@creative-biomart.com)  Fax: 1-631-938-8127

 45-1 Ramsey Road, Shirley, NY 11967, USA



SDS-PAGE



Tel: 1-631-559-9269 1-516-512-3133

Email: [info@creative-biomart.com](mailto:info@creative-biomart.com) Fax: 1-631-938-8127

45-1 Ramsey Road, Shirley, NY 11967, USA