

Recombinant Human CLEC10A Protein, GST-tagged

Cat. No. CLEC10A-1451H **Lot. No.** (See product label)

SPECIFICATION

Product Overview	Human CLEC10A full-length ORF (AAH39011, 1 a.a. - 316 a.a.) recombinant protein with GST-tag at N-terminal.
Species	Human
Source	Wheat Germ
Description	This gene encodes a member of the C-type lectin/C-type lectin-like domain (CTL/CTLD) superfamily. Members of this family share a common protein fold and have diverse functions, such as cell adhesion, cell-cell signalling, glycoprotein turnover, and roles in inflammation and immune response. The encoded type 2 transmembrane protein may function as a cell surface antigen. Two transcript variants encoding distinct isoforms have been identified for this gene. [provided by RefSeq, Jul 2008]
Molecular Mass	60.5 kDa
AA Sequence	MTRTYENFQYLENKVKVQGFKNGPLPLQSLQLRCSGPCHLLLSLGLGLLLLVIICVV GFQNSKFQRDLVTLRTDFSNFTSNTVAEIQALTSQSSLEETIASLKAIEVEGFKQER QAGVSELQEHTTQKAHLGHCPHCPSVCVPVHSEMLLRVQQLVQDLKLTQCQVATL NNNASTEGTCCPVNWVEHQDSCYWFSHSGMSWAEAEKYCQLKNAHLVINSREE QNFVQKYLGSAYTWMGLSDPEGAWKWVDGTDYATGFQNWKPGQPDDWQGHGL GGGEDCAHFHPDGRWNDDVCQRPYHVVCEAGLGQTSQESH
Applications	Enzyme-linked Immunoabsorbent Assay

 Tel: 1-631-559-9269 1-516-512-3133

 Email: info@creative-biomart.com  Fax: 1-631-938-8127

 45-1 Ramsey Road, Shirley, NY 11967, USA

Western Blot (Recombinant protein)
 Antibody Production
 Protein Array

Notes	Best use within three months from the date of receipt of this protein.
Storage	Store at -80 centigrade. Aliquot to avoid repeated freezing and thawing.
Storage Buffer	50 mM Tris-HCl, 10 mM reduced Glutathione, pH=8.0 in the elution buffer.

GENE INFORMATION

Gene Name	CLEC10A C-type lectin domain family 10, member A [Homo sapiens]
Official Symbol	CLEC10A
Synonyms	CLEC10A; C-type lectin domain family 10, member A; C type (calcium dependent, carbohydrate recognition domain) lectin, superfamily member 14 (macrophage derived) , CLECSF13, CLECSF14; C-type lectin domain family 10 member A; CD301; HML; HML2; macrophage lectin 2 (calcium dependent); C-type (calcium dependent, carbohydrate-recognition domain) lectin, superfamily member 13 (macrophage-derived); C-type (calcium dependent, carbohydrate-recognition domain) lectin, superfamily member 14 (macrophage-derived); MGL; CLECSF13; CLECSF14;
Gene ID	10462
mRNA Refseq	NM_006344
Protein Refseq	NP_006335
MIM	605999

 Tel: 1-631-559-9269 1-516-512-3133

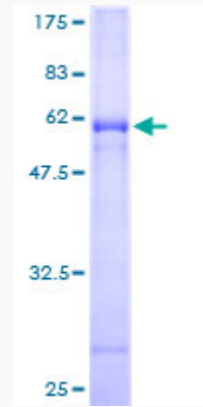
 Email: info@creative-biomart.com  Fax: 1-631-938-8127

 45-1 Ramsey Road, Shirley, NY 11967, USA

UniProt ID

Q8IUN9

Quality Control
Testing:



12.5% SDS-PAGE Stained with Coomassie Blue.

 Tel: 1-631-559-9269 1-516-512-3133

 Email: info@creative-biomart.com  Fax: 1-631-938-8127

 45-1 Ramsey Road, Shirley, NY 11967, USA