

Recombinant Human CLEC10A Protein, MYC/DDK-tagged, C13 and N15-labeled

Cat. No. CLEC10A-306H **Lot. No.** (See product label)

SPECIFICATION

Product Overview

CLEC10A MS Standard C13 and N15-labeled recombinant protein (NP_006335) with a C-terminal MYC/DDK tag, was expressed in HEK293 cells.

Species

Human

Source

HEK293

Description

This gene encodes a member of the C-type lectin/C-type lectin-like domain (CTL/CTLD) superfamily. Members of this family share a common protein fold and have diverse functions, such as cell adhesion, cell-cell signalling, glycoprotein turnover, and roles in inflammation and immune response. The encoded type 2 transmembrane protein may function as a cell surface antigen. Two transcript variants encoding distinct isoforms have been identified for this gene. [provided by RefSeq, Jul 2008]

Molecular Mass

32.7 kDa

AA Sequence

MTRTYENFQYLENKVKVQGFKNGPLPLQSLQLRCLCSGPCHLLLSLGLGLLLLVIICVV
 GFQNSKFQRDLVTLRTDFSNFTSNTVAEIQALTSQSSLEETIASLKAIEVEGFKQER
 QAVHSEMLLRVQQLVQDLKKLTCQVATLNNNGEEASTEGTCCPVNWWEHQDSCY
 WFSHSGMSWAEAEKYCQLKNAHLVVINSREEQNFVQKYLGSAYTWMGLSDPEGA
 WKWVDGTDYATGFQNWKPGQPDDWQGHGLGGGEDCAHFHPDGRWNDVDCQR
 PYHWVCEAGLGQTSQESHTRTRPLEQKLISEEDLAANDILDYKDDDDKV

 Tel: 1-631-559-9269 1-516-512-3133

 Email: info@creative-biomart.com  Fax: 1-631-938-8127

 45-1 Ramsey Road, Shirley, NY 11967, USA

Purity	> 80% as determined by SDS-PAGE and Coomassie blue staining
Stability	Stable for 3 months from receipt of products under proper storage and handling conditions.
Storage	Store at -80 centigrade. Avoid repeated freeze-thaw cycles.
Concentration	50 µg/mL as determined by BCA
Storage Buffer	100 mM glycine, 25 mM Tris-HCl, pH 7.3.

GENE INFORMATION

Gene Name	CLEC10A C-type lectin domain family 10, member A [Homo sapiens (human)]
Official Symbol	CLEC10A
Synonyms	CLEC10A; C-type lectin domain family 10, member A; C type (calcium dependent, carbohydrate recognition domain) lectin, superfamily member 14 (macrophage derived), CLECSF13, CLECSF14; C-type lectin domain family 10 member A; CD301; HML; HML2; macrophage lectin 2 (calcium dependent); C-type (calcium dependent, carbohydrate-recognition domain) lectin, superfamily member 13 (macrophage-derived); C-type (calcium dependent, carbohydrate-recognition domain) lectin, superfamily member 14 (macrophage-derived); MGL; CLECSF13; CLECSF14;
Gene ID	10462
mRNA Refseq	NM_006344
Protein Refseq	NP_006335

 Tel: 1-631-559-9269 1-516-512-3133

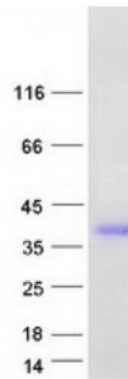
 Email: info@creative-biomart.com  Fax: 1-631-938-8127

 45-1 Ramsey Road, Shirley, NY 11967, USA

MIM 605999

UniProt ID Q8IUN9

SDS-PAGE



 Tel: 1-631-559-9269 1-516-512-3133

 Email: info@creative-biomart.com  Fax: 1-631-938-8127

 45-1 Ramsey Road, Shirley, NY 11967, USA