

Recombinant Human CLEC10A protein, rFc-tagged

Cat. No. CLEC10A-3763H Lot. No. (See product label)

SPECIFICATION

Product Overview	Recombinant Human CLEC10A protein(Q8IUN9-1)(Gln61-His316), fused with N-terminal rFc tag, was expressed in HEK293.
Species	Human
Source	HEK293
Form	Lyophilized from 0.22 µm filtered solution in PBS, pH 7.4. Normally 5% trehalose and 5% mannitol are added as protectants before lyophilization.
Molecular Mass	56.0 kDa
Endotoxin	<0.1 EU/µg protein, LAL method
Purity	>90 %, SDS-PAGE
Storage	It is recommended that the protein be aliquoted for optimal storage. Avoid repeated freeze-thaw cycles. Until expiry date, -20°C to -80°C as lyophilized proteins. 3 months, -20°C to -80°C under sterile conditions after reconstitution.
Reconstitution	Briefly centrifuge the tube before opening. Reconstitute at 0.1-0.5 mg/mL in sterile water.

GENE INFORMATION

 Tel: 1-631-559-9269 1-516-512-3133

 Email: info@creative-biomart.com  Fax: 1-631-938-8127

 45-1 Ramsey Road, Shirley, NY 11967, USA

Gene Name	CLEC10A C-type lectin domain family 10, member A [Homo sapiens]
Official Symbol	CLEC10A
Synonyms	CLEC10A; C-type lectin domain family 10, member A; C type (calcium dependent, carbohydrate recognition domain) lectin, superfamily member 14 (macrophage derived) , CLECSF13, CLECSF14; C-type lectin domain family 10 member A; CD301; HML; HML2; macrophage lectin 2 (calcium dependent); C-type (calcium dependent, carbohydrate-recognition domain) lectin, superfamily member 13 (macrophage-derived); C-type (calcium dependent, carbohydrate-recognition domain) lectin, superfamily member 14 (macrophage-derived); MGL; CLECSF13; CLECSF14;
Gene ID	10462
mRNA Refseq	NM_006344
Protein Refseq	NP_006335
MIM	605999
UniProt ID	Q8IUN9

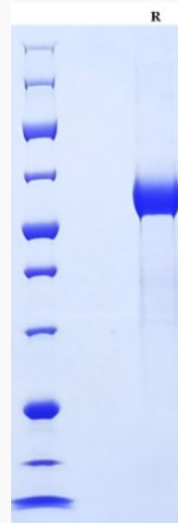
 Tel: 1-631-559-9269 1-516-512-3133

 Email: info@creative-biomart.com  Fax: 1-631-938-8127

 45-1 Ramsey Road, Shirley, NY 11967, USA



SDS-PAGE



Tel: 1-631-559-9269 1-516-512-3133

Email: info@creative-biomart.com Fax: 1-631-938-8127

45-1 Ramsey Road, Shirley, NY 11967, USA