

Recombinant Human CLEC10A Protein (Gln61-Asn292), N-Fc tagged

Cat. No. CLEC10A-3904H Lot. No. (See product label)

SPECIFICATION

Product Overview	Recombinant human CLEC10A (Gln61-Asn292) fused with the N-terminal Fc tag was expressed in Mammalian cells.
Species	Human
Source	Mammalian Cells
ProteinLength	Gln61-Asn292
Form	Lyophilized powder/frozen liquid
Molecular Mass	50.52 kDa
Endotoxin	< 1.0 EU/μg of the protein as determined by the LAL method.
Purity	>90% as determined by SDS-PAGE.
Notes	For research use only.
Storage	Use a manual defrost freezer and avoid repeated freeze thaw cycles. Store at 2 to 8 centigrade for one week. Store at -20 to -80 centigrade for twelve months from the date of receipt.
Storage Buffer	Supplied as solution form in PBS or lyophilized from PBS.

 Tel: 1-631-559-9269 1-516-512-3133

 Email: info@creative-biomart.com  Fax: 1-631-938-8127

 45-1 Ramsey Road, Shirley, NY 11967, USA

Reconstitution Reconstitute in sterile water for a stock solution.

Shipping They are shipped out with dry ice/blue ice unless customers require otherwise.

GENE INFORMATION

Gene Name [CLEC10A C-type lectin domain family 10, member A \[Homo sapiens \(human\) \]](#)

Official Symbol [CLEC10A](#)

Synonyms

CLEC10A; C-type lectin domain family 10, member A; C type (calcium dependent, carbohydrate recognition domain) lectin, superfamily member 14 (macrophage derived), CLECSF13, CLECSF14; C-type lectin domain family 10 member A; CD301; HML; HML2; macrophage lectin 2 (calcium dependent); C-type (calcium dependent, carbohydrate-recognition domain) lectin, superfamily member 13 (macrophage-derived); C-type (calcium dependent, carbohydrate-recognition domain) lectin, superfamily member 14 (macrophage-derived); MGL; CLECSF13; CLECSF14;

Gene ID [10462](#)

mRNA Refseq [NM_006344](#)

Protein Refseq [NP_006335](#)

MIM [605999](#)

UniProt ID [Q8IUN9](#)

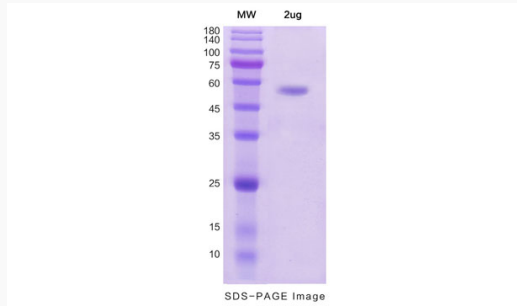
 Tel: 1-631-559-9269 1-516-512-3133

 Email: info@creative-biomart.com  Fax: 1-631-938-8127

 45-1 Ramsey Road, Shirley, NY 11967, USA



SDS-PAGE



Tel: 1-631-559-9269 1-516-512-3133

Email: info@creative-biomart.com Fax: 1-631-938-8127

45-1 Ramsey Road, Shirley, NY 11967, USA