

Recombinant Human CLEC10A protein, Fc-tagged

Cat. No. CLEC10A-7302H Lot. No. (See product label)

SPECIFICATION

| | |
|-------------------------|--|
| Product Overview | Recombinant Human CLEC10A protein(Q8IUN9-2) (Gln61-His292) was expressed in HEK293, with the fused Fc region of human IgG1 at the N-terminus. |
| Species | Human |
| Source | HEK293 |
| ProteinLength | 61-292 aa |
| Form | Lyophilized from sterile PBS, pH 7.4. |
| Molecular Mass | The recombinant human CLEC10A/Fc is a disulfide-linked homodimer. The reduced monomer comprises 492 amino acids and has a predicted molecular mass of 54.6 kDa. The apparent molecular mass of the protein is approximately 58 kDa in SDS-PAGE under reducing conditions due to glycosylation. |
| Endotoxin | < 1.0 EU per µg of the protein as determined by the LAL method. |
| Purity | > 85 % as determined by SDS-PAGE |
| Storage | Store it under sterile conditions at -20°C to -80°C upon receiving. Recommend to aliquot the protein into smaller quantities for optimal storage. Avoid repeated freeze-thaw cycles. |
| Reconstitution | It is recommended that sterile water be added to the vial to prepare a stock solution of |

 Tel: 1-631-559-9269 1-516-512-3133

 Email: info@creative-biomart.com  Fax: 1-631-938-8127

 45-1 Ramsey Road, Shirley, NY 11967, USA

0.2 ug/ul. Centrifuge the vial at 4°C before opening to recover the entire contents.

GENE INFORMATION

Gene Name CLEC10A C-type lectin domain family 10, member A [Homo sapiens]

Official Symbol CLEC10A

Synonyms CLEC10A; C-type lectin domain family 10, member A; C type (calcium dependent, carbohydrate recognition domain) lectin, superfamily member 14 (macrophage derived) , CLECSF13, CLECSF14; C-type lectin domain family 10 member A; CD301; HML; HML2; macrophage lectin 2 (calcium dependent); C-type (calcium dependent, carbohydrate-recognition domain) lectin, superfamily member 13 (macrophage-derived); C-type (calcium dependent, carbohydrate-recognition domain) lectin, superfamily member 14 (macrophage-derived); MGL; CLECSF13; CLECSF14;

Gene ID 10462

mRNA Refseq NM_006344

Protein Refseq NP_006335

MIM 605999

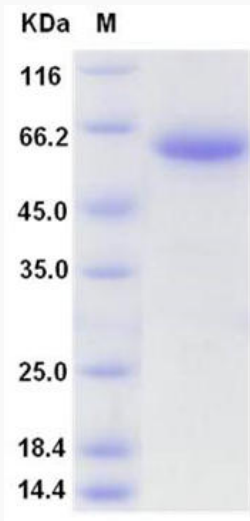
UniProt ID Q8IUN9

 Tel: 1-631-559-9269 1-516-512-3133

 Email: info@creative-biomart.com  Fax: 1-631-938-8127

 45-1 Ramsey Road, Shirley, NY 11967, USA

SDS-PAGE



 Tel: 1-631-559-9269 1-516-512-3133

 Email: info@creative-biomart.com  Fax: 1-631-938-8127

 45-1 Ramsey Road, Shirley, NY 11967, USA