

Recombinant Human CLEC11A Protein (Ala22-Phe323), N-GST tagged

Cat. No. CLEC11A-2188H Lot. No. (See product label)

SPECIFICATION

Product Overview	Recombinant human CLEC11A (Ala22-Phe323) fused with N-GST tag was expressed in E. coli.
Species	Human
Source	E.coli
ProteinLength	Ala22-Phe323
Form	Lyophilized powder/frozen liquid
Molecular Mass	60.37 kDa
Purity	>90% as determined by SDS-PAGE
Notes	For research use only.
Storage	Use a manual defrost freezer and avoid repeated freeze thaw cycles. Store at 2 to 8 centigrade for one week. Store at -20 to -80 centigrade for twelve months from the date of receipt.
Storage Buffer	0.01M PBS, pH 7.4, 0.02% NLS
Reconstitution	Reconstitute in sterile water for a stock solution.

 Tel: 1-631-559-9269 1-516-512-3133

 Email: info@creative-biomart.com  Fax: 1-631-938-8127

 45-1 Ramsey Road, Shirley, NY 11967, USA

Shipping They are shipped out with dry ice/blue ice unless customers require otherwise.

GENE INFORMATION

Gene Name CLEC11A C-type lectin domain family 11, member A [Homo sapiens (human)]

Official Symbol CLEC11A

Synonyms CLEC11A; C-type lectin domain family 11, member A; SCGF, stem cell growth factor; lymphocyte secreted C type lectin; C-type lectin domain family 11 member A; CLECSF3; LSLCL; P47; stem cell growth factor; lymphocyte secreted C-type lectin; C-type lectin superfamily member 3; lymphocyte secreted long form of C-type lectin; C-type (calcium dependent, carbohydrate-recognition domain) lectin, superfamily member 3; SCGF;

Gene ID 6320

mRNA Refseq NM_002975

Protein Refseq NP_002966

MIM 604713

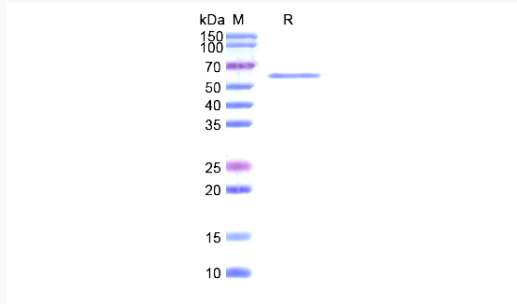
UniProt ID Q9Y240

 Tel: 1-631-559-9269 1-516-512-3133

 Email: info@creative-biomart.com  Fax: 1-631-938-8127

 45-1 Ramsey Road, Shirley, NY 11967, USA

SDS-PAGE



 Tel: 1-631-559-9269 1-516-512-3133

 Email: info@creative-biomart.com  Fax: 1-631-938-8127

 45-1 Ramsey Road, Shirley, NY 11967, USA