

Recombinant Rat CLEC12A Protein, His-tagged

Cat. No. CLEC12A-102R **Lot. No.** (See product label)

SPECIFICATION

Product Overview	Recombinant Rat CLEC12A Protein, fused to His-tag, was expressed in HEK293.
Species	Rat
Source	HEK293
Description	Predicted to be integral component of membrane. Orthologous to human CLEC12A (C-type lectin domain family 12 member A).
Form	Supplied as a 0.2 µm filtered solution in PBS , pH7.4.
Molecular Mass	~26.2 kDa
AA Sequence	MHSSALLCCLVLLTGVRAETEMIKSNQLQRVKEELQENVSLQLMHNLNNSKKIKTLS AMLQNIATQLCQELSKKEPGHKCKPCPKASDWYKDSCYSRFQKYATWQESVEFCS ARNASLLKVKNKDELEFIKSKELYNYWLALPPSKMYRSYELLSEKMFLSEGFKRSTY DITKMSCGFIRGEYVYYTNCDEEKYTMCEETASKVQVESVLSLPEGSILHHHHHH
Purity	>90%
Storage	Store it under sterile conditions at -20 to -80 centigrade. It is recommended that the protein be aliquoted for optimal storage. Avoid repeated freeze-thaw cycles.
Concentration	0.417 mg/mL

 Tel: 1-631-559-9269 1-516-512-3133

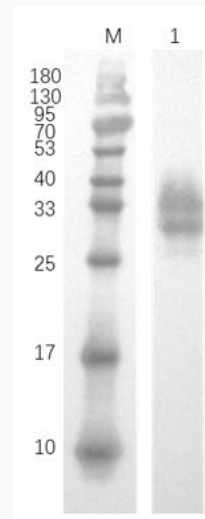
 Email: info@creative-biomart.com  Fax: 1-631-938-8127

 45-1 Ramsey Road, Shirley, NY 11967, USA

GENE INFORMATION

Gene Name	Clec12a C-type lectin domain family 12, member A [<i>Rattus norvegicus</i> (Norway rat)]
Official Symbol	CLEC12A
Synonyms	CLL1; MICL; CD371; CLL-1; DCAL-2
Gene ID	680338
mRNA Refseq	NM_001134716
Protein Refseq	NP_001128188
UniProt ID	B4F798

SDS-PAGE



12% reducing western blotting analysis of purified Rat CLEC12A (approximately 3 mg protein loaded). Primary antibody: Anti-His Tag antibody.

 Tel: 1-631-559-9269 1-516-512-3133

 Email: info@creative-biomart.com  Fax: 1-631-938-8127

 45-1 Ramsey Road, Shirley, NY 11967, USA