

Recombinant Human CLEC12A Protein, GST-tagged

Cat. No. CLEC12A-1456H **Lot. No.** (See product label)

SPECIFICATION

Product Overview	Human CLEC12A partial ORF (ADR82900.1, 108 a.a. - 221 a.a.) recombinant protein with GST tag at N-terminal.
Species	Human
Source	Wheat Germ
ProteinLength	108-221 a.a.
Description	This gene encodes a member of the C-type lectin/C-type lectin-like domain (CTL/CTLD) superfamily. Members of this family share a common protein fold and have diverse functions, such as cell adhesion, cell-cell signaling, glycoprotein turnover, and roles in inflammation and immune response. The protein encoded by this gene is a negative regulator of granulocyte and monocyte function. Several alternatively spliced transcript variants of this gene have been described, but the full-length nature of some of these variants has not been determined. This gene is closely linked to other CTL/CTLD superfamily members in the natural killer gene complex region on chromosome 12p13. [provided by RefSeq, May 2011]
Molecular Mass	38.17 kDa
AA Sequence	TTLQTIATKLCRELYSKEQEHEKCKPCPRRWIWHKDSCYFLSDDVQTWQESKMACAA QNASLLKINNKNLEFIKSQRSYDYWLGLSPEEDSTRGMRVDNIINSSAWVIRNAP D

 Tel: 1-631-559-9269 1-516-512-3133

 Email: info@creative-biomart.com  Fax: 1-631-938-8127

 45-1 Ramsey Road, Shirley, NY 11967, USA

Applications	Enzyme-linked Immunoabsorbent Assay Western Blot (Recombinant protein) Antibody Production Protein Array
Notes	Best use within three months from the date of receipt of this protein.
Storage	Store at -80 centigrade. Aliquot to avoid repeated freezing and thawing.
Storage Buffer	50 mM Tris-HCl, 10 mM reduced Glutathione, pH=8.0 in the elution buffer.
GENE INFORMATION	
Gene Name	CLEC12A C-type lectin domain family 12, member A [Homo sapiens]
Official Symbol	CLEC12A
Synonyms	CLEC12A; C-type lectin domain family 12, member A; C-type lectin domain family 12 member A; CLL 1; MICL; C-type lectin superfamily; C-type lectin protein CLL-1; C-type lectin-like molecule-1; dendritic cell-associated lectin 2; myeloid inhibitory C-type lectin-like receptor; CLL1; CLL-1; DCAL-2; MGC70602;
Gene ID	160364
mRNA Refseq	NM_001207010
Protein Refseq	NP_001193939
MIM	612088
UniProt ID	Q5QGZ9

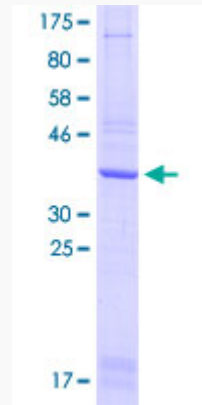
 Tel: 1-631-559-9269 1-516-512-3133

 Email: info@creative-biomart.com  Fax: 1-631-938-8127

 45-1 Ramsey Road, Shirley, NY 11967, USA

Quality Control

Testing:



12.5% SDS-PAGE Stained with Coomassie Blue

 Tel: 1-631-559-9269 1-516-512-3133

 Email: info@creative-biomart.com  Fax: 1-631-938-8127

 45-1 Ramsey Road, Shirley, NY 11967, USA