

## Recombinant Human CLEC12A protein, His-tagged

Cat. No. CLEC12A-193H Lot. No. (See product label)

### SPECIFICATION

<b>Product Overview</b>	Recombinant Human CLEC12A protein(Q5QGZ9-2)(His65-Ala265), fused with N-terminal His tag, was expressed in HEK293.
<b>Species</b>	Human
<b>Source</b>	HEK293
<b>ProteinLength</b>	His65-Ala265
<b>Tag</b>	N-His
<b>Form</b>	Lyophilized from 0.22µm filtered solution in PBS (pH 7.4). Normally 5% trehalose is added as protectant before lyophilization.
<b>Bio-activity</b>	Immobilized Human CLEC12A at 1ug (100ul/Well) on the plate. Dose response curve for Anti-CLEC12A Antibody, hFc Tag with the EC50 of 3.5ng/ml determined by ELISA.
<b>Molecular Mass</b>	The protein has a predicted MW of 24.6 kDa. Due to glycosylation, the protein migrates to 38-55 kDa based on Tris-Bis PAGE result.
<b>Endotoxin</b>	Less than 1EU per µg by the LAL method.
<b>Purity</b>	> 95% as determined by Tris-Bis PAGE;> 95% as determined by HPLC

 Tel: 1-631-559-9269 1-516-512-3133

 Email: [info@creative-biomart.com](mailto:info@creative-biomart.com)  Fax: 1-631-938-8127

 45-1 Ramsey Road, Shirley, NY 11967, USA

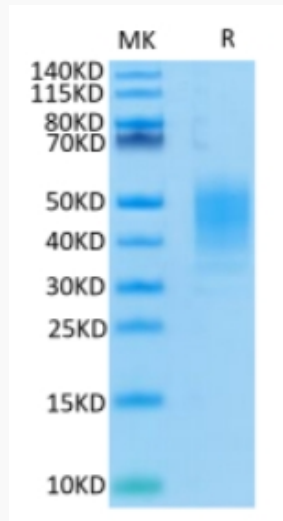
<b>Storage</b>	Reconstituted protein stable at -80°C for 12 months, 4°C for 1 week. Use a manual defrost freezer and avoid repeated freeze-thaw cycles.
<b>Reconstitution</b>	Centrifuge tubes before opening. Reconstituting to a concentration more than 100 µg/ml is recommended. Dissolve the lyophilized protein in distilled water.
<b>GENE INFORMATION</b>	
<b>Gene Name</b>	CLEC12A C-type lectin domain family 12, member A [ Homo sapiens ]
<b>Official Symbol</b>	CLEC12A
<b>Synonyms</b>	CLEC12A; C-type lectin domain family 12, member A; C-type lectin domain family 12 member A; CLL 1; MICL; C-type lectin superfamily; C-type lectin protein CLL-1; C-type lectin-like molecule-1; dendritic cell-associated lectin 2; myeloid inhibitory C-type lectin-like receptor; CLL1; CLL-1; DCAL-2; MGC70602;
<b>Gene ID</b>	160364
<b>mRNA Refseq</b>	NM_001207010
<b>Protein Refseq</b>	NP_001193939
<b>MIM</b>	612088
<b>UniProt ID</b>	Q5QGZ9

 Tel: 1-631-559-9269 1-516-512-3133

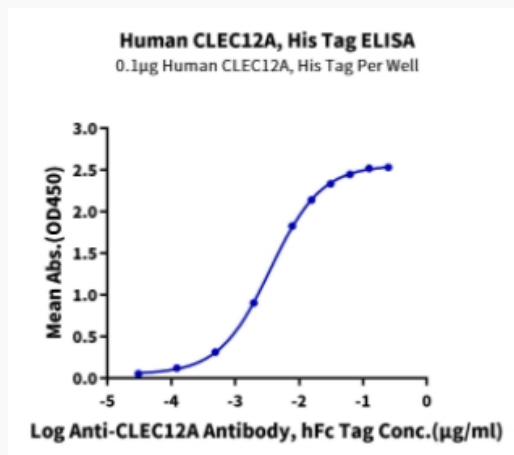
 Email: [info@creative-biomart.com](mailto:info@creative-biomart.com)  Fax: 1-631-938-8127

 45-1 Ramsey Road, Shirley, NY 11967, USA

**Tris-Bis PAGE**



**ELISA Data**



 Tel: 1-631-559-9269 1-516-512-3133

 Email: [info@creative-biomart.com](mailto:info@creative-biomart.com)  Fax: 1-631-938-8127

 45-1 Ramsey Road, Shirley, NY 11967, USA