

Active Recombinant Human CLEC12A Protein, hFc-tagged

Cat. No. CLEC12A-213H Lot. No. (See product label)

SPECIFICATION

Product Overview	Recombinant Human CLEC12A Protein(Q5QGZ9-2)(His65-Ala265) is expressed from Expi293 with hFc tag at the N-terminal.
Species	Human
Source	HEK293
ProteinLength	His65-Ala265
Form	Lyophilized from 0.22µm filtered solution in PBS (pH 7.4). Normally 5 % trehalose is added as protectant before lyophilization.
Bio-activity	Immobilized Human CLEC12A, hFc Tag at 0.5µg/ml (100µl/Well) on the plate. Dose response curve for Biotinylated Anti-CLEC12A Antibody, hFc Tag with the EC50 of 34.8ng/ml determined by ELISA.
Molecular Mass	The protein has a predicted MW of 50.9 kDa. Due to glycosylation, the protein migrates to 68-73 kDa based on Tris-Bis PAGE result.
Endotoxin	Less than 1EU per µg by the LAL method.
Purity	> 95% as determined by Tris-Bis PAGE > 95% as determined by HPLC
Storage	Valid for 12 months from date of receipt when stored at -80°C.

 Tel: 1-631-559-9269 1-516-512-3133

 Email: info@creative-biomart.com  Fax: 1-631-938-8127

 45-1 Ramsey Road, Shirley, NY 11967, USA

Recommend to aliquot the protein into smaller quantities for optimal storage. Please do not repeated freeze-thaw cycles.

Reconstitution

Centrifuge tubes before opening. Reconstituting to a concentration more than 100 µg/ml is recommended (usually we use 1mg/ml solution for lyophilization). Dissolve the lyophilized protein in distilled water.

GENE INFORMATION

Gene Name

CLEC12A C-type lectin domain family 12, member A [Homo sapiens]

Official Symbol

CLEC12A

Synonyms

CLEC12A; C-type lectin domain family 12, member A; C-type lectin domain family 12 member A; CLL 1; M1CL; C-type lectin superfamily; C-type lectin protein CLL-1; C-type lectin-like molecule-1; dendritic cell-associated lectin 2; myeloid inhibitory C-type lectin-like receptor; CLL1; CLL-1; DCAL-2; MGC70602;

Gene ID

160364

mRNA Refseq

NM_001207010

Protein Refseq

NP_001193939

MIM

612088

UniProt ID

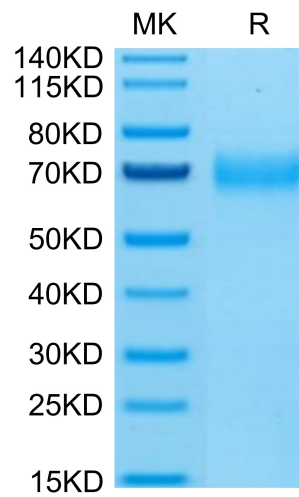
Q5QGZ9

 Tel: 1-631-559-9269 1-516-512-3133

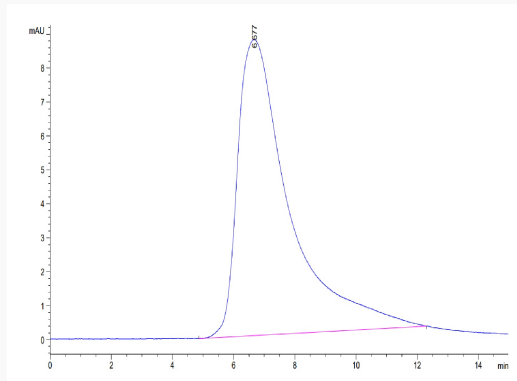
 Email: info@creative-biomart.com  Fax: 1-631-938-8127

 45-1 Ramsey Road, Shirley, NY 11967, USA

Tris-Bis PAGE



SEC-HPLC

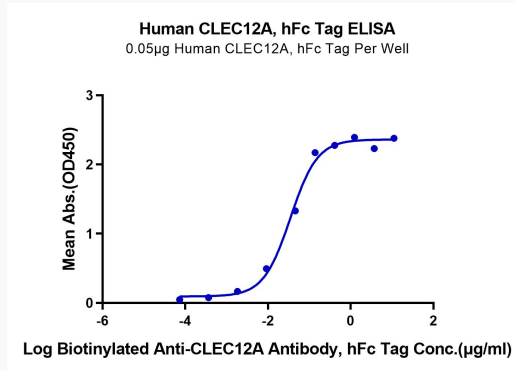


 Tel: 1-631-559-9269 1-516-512-3133

 Email: info@creative-biomart.com  Fax: 1-631-938-8127

 45-1 Ramsey Road, Shirley, NY 11967, USA

ELISA Data



 Tel: 1-631-559-9269 1-516-512-3133

 Email: info@creative-biomart.com  Fax: 1-631-938-8127

 45-1 Ramsey Road, Shirley, NY 11967, USA