

Recombinant Mouse CLEC12A Protein (65-267 aa), His-Myc-tagged

Cat. No. CLEC12A-2641M **Lot. No.** (See product label)

SPECIFICATION

Product Overview	Recombinant Mouse CLEC12A Protein (65-267 aa) is produced by E. coli expression system. This protein is fused with a 10xHis tag at the N-terminal and a Myc tag at the C-terminal. Protein Description: Partial.
Species	Mouse
Source	E.coli
ProteinLength	65-267 aa
Form	Tris-based buffer,50% glycerol
Molecular Mass	30.8 kDa
AA Sequence	YTTLATEMIKSNQLQRAKEELQENVFLQLKHNLNSSKKIKNLSAMLQSTATQLCRELY SKEPEHKCKPCPKGSEWYKDSCYSQLNQYGTWQESVMAC SARNASLLKVKNKDV LEFIKYKKLRYFWLALLPRKDRYQYPLSEKMF LSEESERSTDDIDKKYCGYIDRVNVY YTYCTDENNIICEETASKVQLESVLNGLPEDSR
Purity	> 85% as determined by SDS-PAGE.
Notes	Repeated freezing and thawing is not recommended. Store working aliquots at 4 centigrade for up to one week.

 Tel: 1-631-559-9269 1-516-512-3133

 Email: info@creative-biomart.com  Fax: 1-631-938-8127

 45-1 Ramsey Road, Shirley, NY 11967, USA

Storage

The shelf life is related to many factors, storage state, buffer ingredients, storage temperature and the stability of the protein itself. Generally, the shelf life of liquid form is 6 months at -20 centigrade/-80 centigrade. The shelf life of lyophilized form is 12 months at -20 centigrade/-80 centigrade.

Concentration

A hardcopy of COA will be sent along with the products. Please refer to it for detailed information.

GENE INFORMATION

Gene Name

Clec12a C-type lectin domain family 12, member a [*Mus musculus*]

Official Symbol

CLEC12A

Synonyms

CLEC12A; C-type lectin-like molecule 1; Micl; CLL-1; KLRL1; D230024O04;

Gene ID

232413

mRNA Refseq

NM_177686

Protein Refseq

NP_808354

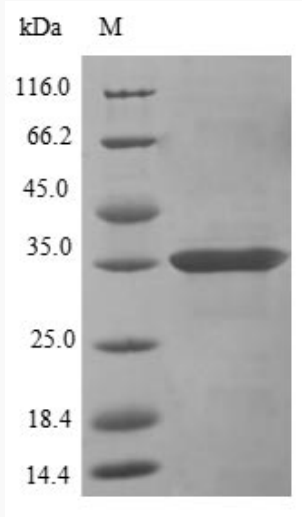
UniProt ID

Q504P2

 Tel: 1-631-559-9269 1-516-512-3133

 Email: info@creative-biomart.com  Fax: 1-631-938-8127

 45-1 Ramsey Road, Shirley, NY 11967, USA



(Tris-Glycine gel) Discontinuous SDS-PAGE (reduced) with 5% enrichment gel and 15% separation gel.

 Tel: 1-631-559-9269 1-516-512-3133

 Email: info@creative-biomart.com  Fax: 1-631-938-8127

 45-1 Ramsey Road, Shirley, NY 11967, USA