

Recombinant Mouse CLEC12A Protein (65-267 aa), His-Myc-tagged

Cat. No. CLEC12A-2757M **Lot. No.** (See product label)

SPECIFICATION

Product Overview	Recombinant Mouse CLEC12A Protein (65-267 aa) is produced by Baculovirus expression system. This protein is fused with a 10xHis tag at the N-terminal and a Myc tag at the C-terminal. Protein Description: Partial.
Species	Mouse
Source	Insect Cells
ProteinLength	65-267 aa
Description	Cell surface receptor that modulates signaling cascades and mediates tyrosine phosphorylation of target MAP kinases.
Form	Tris-based buffer,50% glycerol
Molecular Mass	27.8 kDa
AA Sequence	YTTLATEMIKSNQLQRAKEELQENVFLQLKHNLNSSKKIKNLSAMLQSTATQLCRELY SKEPEHKCKPCPKGSEWYKDSCYSQLNQYGTWQESVMACSARNASLLKVKNKDV LEFIKYKRLRYFWLALLPRKDRTQYPLSEKMFLSEESERSTDDIDKKYCGYIDRVNVY YTYCTDENNIICEETASKVQLESVLNGLPEDSR
Purity	> 85% as determined by SDS-PAGE.

 Tel: 1-631-559-9269 1-516-512-3133

 Email: info@creative-biomart.com  Fax: 1-631-938-8127

 45-1 Ramsey Road, Shirley, NY 11967, USA

Notes	Repeated freezing and thawing is not recommended. Store working aliquots at 4 centigrade for up to one week.
Storage	The shelf life is related to many factors, storage state, buffer ingredients, storage temperature and the stability of the protein itself. Generally, the shelf life of liquid form is 6 months at -20 centigrade/-80 centigrade. The shelf life of lyophilized form is 12 months at -20 centigrade/-80 centigrade.
Concentration	A hardcopy of COA will be sent along with the products. Please refer to it for detailed information.

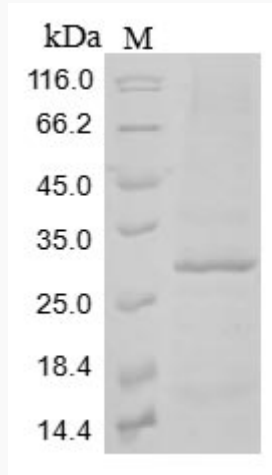
GENE INFORMATION

Gene Name	Clec12a C-type lectin domain family 12, member a [<i>Mus musculus</i>]
Official Symbol	CLEC12A
Synonyms	CLEC12A; C-type lectin-like molecule 1; Micl; CLL-1; KLRL1; D230024O04;
Gene ID	232413
mRNA Refseq	NM_177686
Protein Refseq	NP_808354
UniProt ID	Q504P2

 Tel: 1-631-559-9269 1-516-512-3133

 Email: info@creative-biomart.com  Fax: 1-631-938-8127

 45-1 Ramsey Road, Shirley, NY 11967, USA



(Tris-Glycine gel) Discontinuous SDS-PAGE (reduced) with 5% enrichment gel and 15% separation gel.

 Tel: 1-631-559-9269 1-516-512-3133

 Email: info@creative-biomart.com  Fax: 1-631-938-8127

 45-1 Ramsey Road, Shirley, NY 11967, USA