

Recombinant Mouse CLEC12A Protein, His-tagged

Cat. No. CLEC12A-3547M Lot. No. (See product label)

SPECIFICATION

Product Overview	Recombinant Mouse CLEC12A Protein(NP_808354.1), fused to His-tag, was expressed in HEK293.
Species	Mouse
Source	HEK293
Form	Supplied as a 0.2 µm filtered solution in PBS, pH 7.4
Molecular Mass	~ 26.5 kDa, reducing condition.
AA Sequence	MHSSALLCCLVLLTGVRAYTTLATEMIKSNQLQRAKEELQENVFLQLKHNLNSSKKIK NLSAMLQSTATQLCRELYSKEPEHKCKPCPKGSEWYKDSCYSQLNQYGTWQESV MACSARNASLLKVKNKDVLFIKYKRLRYFWLALLPRKDRTQYPLSEKMFLSEESER STDDIDKKYCGYIDRVNVVYYTYCTDENNIICEETASKVQLESVLNGLPEDSRHHHHH H
Purity	>90%, by SDS-PAGE
Storage	Store it under sterile conditions at -20 to -80°C. It is recommended that the protein be aliquoted for optimal storage. Avoid repeated freeze-thaw cycles.
Concentration	0.248 mg/ml

GENE INFORMATION

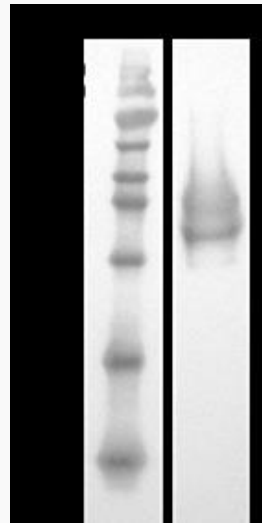
 Tel: 1-631-559-9269 1-516-512-3133

 Email: info@creative-biomart.com  Fax: 1-631-938-8127

 45-1 Ramsey Road, Shirley, NY 11967, USA

Gene Name	Clec12a C-type lectin domain family 12, member a [<i>Mus musculus</i> (house mouse)]
Official Symbol	CLEC12A
Synonyms	Mi; Micl; CLL-1; KLRL1; D230024O04
Gene ID	232413
mRNA Refseq	NM_177686.4
Protein Refseq	NP_808354.1
UniProt ID	Q504P2

**SDS-PAGE of
CLEC12A-3547M**



 Tel: 1-631-559-9269 1-516-512-3133

 Email: info@creative-biomart.com  Fax: 1-631-938-8127

 45-1 Ramsey Road, Shirley, NY 11967, USA