

Active Recombinant Human CLEC12A Protein (Thr67-Ala265), N-hFc tagged

Cat. No. CLEC12A-50H Lot. No. (See product label)

SPECIFICATION

Product Overview	Recombinant Human MICL/CLEC12A Protein ((Thr67-Ala265)) with a Human IgG1 (Pro100-Lys330) Fc tag at N-terminus was expressed in Chinese Hamster Ovary cell line.
Species	Human
Source	CHO
ProteinLength	Thr67-Ala265
Description	This gene encodes a member of the C-type lectin/C-type lectin-like domain (CTL/CTLD) superfamily. Members of this family share a common protein fold and have diverse functions, such as cell adhesion, cell-cell signaling, glycoprotein turnover, and roles in inflammation and immune response. The protein encoded by this gene is a negative regulator of granulocyte and monocyte function. Several alternatively spliced transcript variants of this gene have been described, but the full-length nature of some of these variants has not been determined. This gene is closely linked to other CTL/CTLD superfamily members in the natural killer gene complex region on chromosome 12p13.
Form	Disulfide-linked homodimer
Bio-activity	Measured by its binding ability in a functional ELISA. When Recombinant Human Integrin alpha X beta 2 Protein is immobilized at 5.00

 Tel: 1-631-559-9269 1-516-512-3133

 Email: info@creative-biomart.com  Fax: 1-631-938-8127

 45-1 Ramsey Road, Shirley, NY 11967, USA

	<p>µg/mL, 100 µL/well, the concentration of Recombinant Human MICL/CLEC12A Fc Chimera that produces 50% of the optimal binding response is approximately 1.20-12.0 µg/mL.</p>
Molecular Mass	<p>Predicted Molecular Mass: 50 kDa SDS-PAGE: 70-85 kDa, under reducing conditions</p>
N-terminal Sequence Analysis	Met
Endotoxin	< 0.10 EU/µg of the protein by the LAL method.
Purity	> 90%, by SDS-PAGE visualized with Silver Staining and quantitative densitometry by Coomassie® Blue Staining.
Storage	<p>Use a manual defrost freezer and avoid repeated freeze-thaw cycles. 12 months from date of receipt, -20 to -70 centigrade as supplied. 1 month, 2 to 8 centigrade under sterile conditions after reconstitution. 3 months, -20 to -70 centigrade under sterile conditions after reconstitution.</p>
Storage Buffer	Lyophilized from a 0.2 µm filtered solution in PBS with Trehalose.
Reconstitution	Reconstitute at 500 µg/mL in PBS.
Shipping	The product is shipped at ambient temperature.
GENE INFORMATION	
Gene Name	CLEC12A C-type lectin domain family 12 member A [Homo sapiens (human)]
Official Symbol	CLEC12A

 Tel: 1-631-559-9269 1-516-512-3133

 Email: info@creative-biomart.com  Fax: 1-631-938-8127

 45-1 Ramsey Road, Shirley, NY 11967, USA

Synonyms

CLEC12A; C-type lectin domain family 12 member A; CLL1; MICL; CD371; CLL-1; DCAL-2; C-type lectin domain family 12 member A; C-type lectin protein CLL-1; C-type lectin-like molecule-1; dendritic cell-associated lectin 2; myeloid inhibitory C-type lectin-like receptor

Gene ID

160364

mRNA Refseq

NM_201623

Protein Refseq

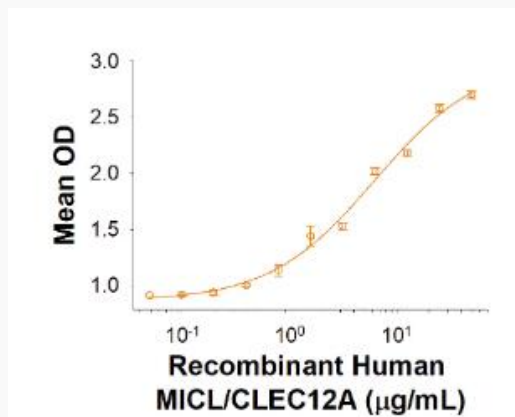
NP_963917

MIM

612088

UniProt ID

Q5QGZ9

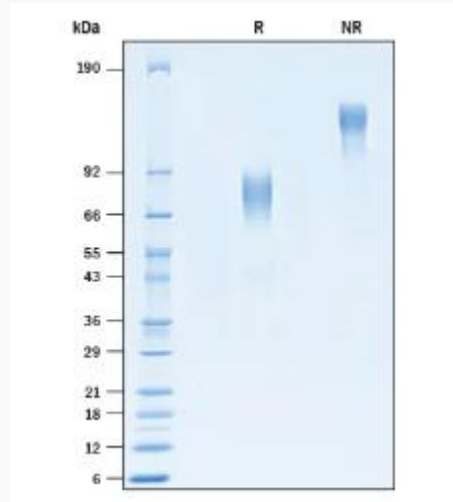
Binding Activity


 Tel: 1-631-559-9269 1-516-512-3133

 Email: info@creative-biomart.com  Fax: 1-631-938-8127


 45-1 Ramsey Road, Shirley, NY 11967, USA

SDS-PAGE



 Tel: 1-631-559-9269 1-516-512-3133

 Email: info@creative-biomart.com  Fax: 1-631-938-8127

 45-1 Ramsey Road, Shirley, NY 11967, USA