

Recombinant Human CLEC14A Protein, GST-tagged

Cat. No. CLEC14A-1457H **Lot. No.** (See product label)

SPECIFICATION

Product Overview	Human CLEC14A full-length ORF (NP_778230.1, 1 a.a. - 490 a.a.) recombinant protein with GST-tag at N-terminal.
Species	Human
Source	Wheat Germ
Description	This gene encodes a member of the C-type lectin/C-type lectin-like domain (CTL/CTLD) superfamily. Members of this family share a common protein fold and have diverse functions, such as cell adhesion, cell-cell signalling, glycoprotein turnover, and roles in inflammation and immune response. This family member plays a role in cell-cell adhesion and angiogenesis. It functions in filopodia formation, cell migration and tube formation. Due to its presence at higher levels in tumor endothelium than in normal tissue endothelium, it is considered to be a candidate for tumor vascular targeting. [provided by RefSeq, Jan 2012]
Molecular Mass	78 kDa
AA Sequence	MRPAFALCLLWQALWPGPGGGGEHPTADRAGCSASGACYSLHHATMKRQAAEEACI LRGGALSTVRAGAELRAVLALLRAGPGPGGGSKDLLFWVALERRRSHCTLENEPLR GFSWLSSDPGGLES DTLQWVEEPQRSCTARRCAVLQATGGVEPAGWKEMRCHLR ANGYLCKYQFEVLC PAPRPGAASNLSYRAPFQLHSAALDFSPPGTEVSALCRGQLPI SVTCIADEIGARWDKLSGDVLCPCPGRYLRAGKCAELPNCLDDLGGFACECATGFE LGKDGRSCVTS GEGQPTLGGTGVPTRRPPATATSPVPQRTWPIRVDEKLGETPLVP

 Tel: 1-631-559-9269 1-516-512-3133

 Email: info@creative-biomart.com  Fax: 1-631-938-8127

 45-1 Ramsey Road, Shirley, NY 11967, USA

EQDNSVTSIPEIPRWGSQSTMSTLQMSLQAESKATITPSGVSISKFNSTTSSATPQAF
 DSSSAVVVFIVSTAVVVLVILTMVTLGLVKLCFHESPSSQPRKESMGPPGLESDPEPA
 ALGSSSAHCTNNGVKVGDCLDRDRAEGALLAESPLGSSDA

Applications	Enzyme-linked Immunoabsorbent Assay Western Blot (Recombinant protein) Antibody Production Protein Array
Notes	Best use within three months from the date of receipt of this protein.
Storage	Store at -80 centigrade. Aliquot to avoid repeated freezing and thawing.
Storage Buffer	50 mM Tris-HCl, 10 mM reduced Glutathione, pH=8.0 in the elution buffer.

GENE INFORMATION

Gene Name	CLEC14A C-type lectin domain family 14, member A [Homo sapiens]
Official Symbol	CLEC14A
Synonyms	CLEC14A; C-type lectin domain family 14, member A; C14orf27, chromosome 14 open reading frame 27; C-type lectin domain family 14 member A; epidermal growth factor receptor 5; CIECT and EGF-like domain containing protein; CEG1; EGFR-5; C14orf27;
Gene ID	161198
mRNA Refseq	NM_175060
Protein Refseq	NP_778230

 Tel: 1-631-559-9269 1-516-512-3133

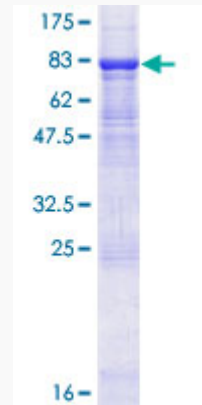
 Email: info@creative-biomart.com  Fax: 1-631-938-8127

 45-1 Ramsey Road, Shirley, NY 11967, USA

MIM 616845

UniProt ID Q86T13

**Quality Control
Testing:**



12.5% SDS-PAGE Stained with Coomassie Blue.

 Tel: 1-631-559-9269 1-516-512-3133

 Email: info@creative-biomart.com  Fax: 1-631-938-8127

 45-1 Ramsey Road, Shirley, NY 11967, USA