

## Recombinant Human CLEC14A protein, His-tagged

Cat. No. CLEC14A-1600H Lot. No. (See product label)

### SPECIFICATION

<b>Product Overview</b>	Recombinant Human CLEC14A protein(Q86T13)(Glu22-Ala397), fused with C-terminal His tag, was expressed in HEK293.
<b>Species</b>	Human
<b>Source</b>	C-His
<b>ProteinLength</b>	Glu22-Ala397
<b>Tag</b>	C-His
<b>Form</b>	Lyophilized from 0.22µm filtered solution in PBS (pH 7.4). Normally 8% trehalose is added as protectant before lyophilization.
<b>Molecular Mass</b>	The protein has a predicted MW of 40.94 kDa. Due to glycosylation, the protein migrates to 70-80 kDa based on Tris-Bis PAGE result.
<b>Endotoxin</b>	Less than 1EU per µg by the LAL method.
<b>Purity</b>	> 95% as determined by Tris-Bis PAGE; > 95% as determined by HPLC.
<b>Storage</b>	Reconstituted protein stable at -80°C for 12 months, 4°C for 1 week. Use a manual defrost freezer and avoid repeated freeze-thaw cycles.
<b>Reconstitution</b>	Centrifuge tubes before opening. Reconstituting to a concentration more than 100

 Tel: 1-631-559-9269 1-516-512-3133

 Email: [info@creative-biomart.com](mailto:info@creative-biomart.com)  Fax: 1-631-938-8127

 45-1 Ramsey Road, Shirley, NY 11967, USA

µg/ml is recommended. Dissolve the lyophilized protein in distilled water.

## GENE INFORMATION

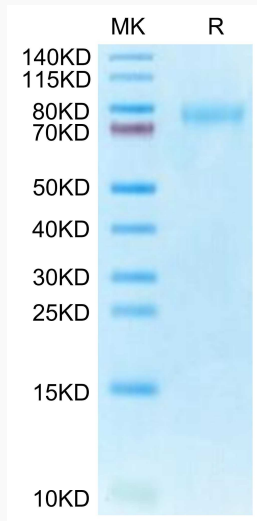
<b>Gene Name</b>	CLEC14A C-type lectin domain family 14, member A [ Homo sapiens ]
<b>Official Symbol</b>	CLEC14A
<b>Synonyms</b>	CLEC14A; C-type lectin domain family 14, member A; C14orf27, chromosome 14 open reading frame 27; C-type lectin domain family 14 member A; epidermal growth factor receptor 5; CIECT and EGF-like domain containing protein; CEG1; EGFR-5; C14orf27;
<b>Gene ID</b>	161198
<b>mRNA Refseq</b>	NM_175060
<b>Protein Refseq</b>	NP_778230
<b>UniProt ID</b>	Q86T13

 Tel: 1-631-559-9269 1-516-512-3133

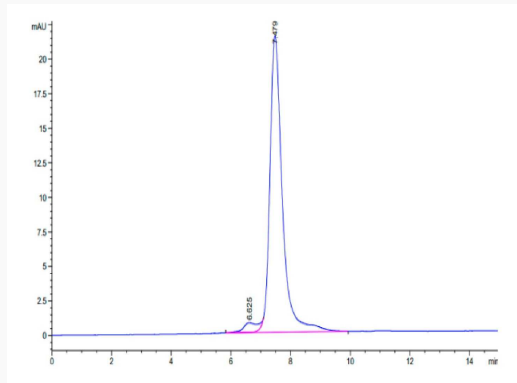
 Email: [info@creative-biomart.com](mailto:info@creative-biomart.com)  Fax: 1-631-938-8127

 45-1 Ramsey Road, Shirley, NY 11967, USA

**Tris-Bis PAGE**



**SEC-HPLC**



 Tel: 1-631-559-9269 1-516-512-3133

 Email: [info@creative-biomart.com](mailto:info@creative-biomart.com)  Fax: 1-631-938-8127

 45-1 Ramsey Road, Shirley, NY 11967, USA