

Recombinant Human CLEC1A Protein, Myc/DDK-tagged, C13 and N15-labeled

Cat. No. CLEC1A-2152H **Lot. No.** (See product label)

SPECIFICATION

Product Overview

CLEC1A MS Standard C13 and N15-labeled recombinant protein (NP_057595) with a C-terminal MYC/DDK tag, was expressed in HEK293 cells.

Species

Human

Source

HEK293

Description

This gene encodes a member of the C-type lectin/C-type lectin-like domain (CTL/CTLD) superfamily. Members of this family share a common protein fold and have diverse functions, such as cell adhesion, cell-cell signaling, glycoprotein turnover, and roles in inflammation and immune response. The encoded protein may play a role in regulating dendritic cell function. This gene is closely linked to other CTL/CTLD superfamily members on chromosome 12p13 in the natural killer gene complex region. Alternative splicing results in multiple transcript variants.

Molecular Mass

32 kDa

AA Sequence

```
MQAKYSSTRDMLDDDGDTTMSLHSQASATTRHPEPRRTEHRAPSSTWRPVALTLL
TLCLVLLIGLAALGLLFFQYYQLSNTGQDTISQMEERLGNTSQELQSLQVQNIKLAGS
LQHVAEKLCRELYNKAGAHRCSPCTEQWKWHGDNCYQFYKDSKSWEDCKYFCLS
ENSTMLKINKQEDLEFAASQSYSEFFYSYWTGLLRPDSGKAWLWMDGTPFTSELFH
IIIDVTSRSDCVAILNGMIFSKDCKELKRCVCERRAGMVKPESLHVPPETLGEGDT
RTRPLEQKLISEEDLAANDILDYKDDDDKV
```

 Tel: 1-631-559-9269 1-516-512-3133

 Email: info@creative-biomart.com  Fax: 1-631-938-8127

 45-1 Ramsey Road, Shirley, NY 11967, USA

Purity	> 80% as determined by SDS-PAGE and Coomassie blue staining
Stability	Stable for 3 months from receipt of products under proper storage and handling conditions.
Storage	Store at -80 centigrade. Avoid repeated freeze-thaw cycles.
Concentration	50 µg/mL as determined by BCA
Storage Buffer	100 mM glycine, 25 mM Tris-HCl, pH 7.3.

GENE INFORMATION

Gene Name	CLEC1A C-type lectin domain family 1 member A [Homo sapiens (human)]
Official Symbol	CLEC1A
Synonyms	CLEC1A; C-type lectin domain family 1, member A; C-type lectin domain family 1 member A; CLEC1; MGC34328; CLEC-1; C-type lectin-like receptor-1;
Gene ID	51267
mRNA Refseq	NM_016511
Protein Refseq	NP_057595
MIM	606782
UniProt ID	Q8NC01

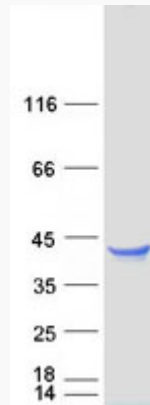
 Tel: 1-631-559-9269 1-516-512-3133

 Email: info@creative-biomart.com  Fax: 1-631-938-8127

 45-1 Ramsey Road, Shirley, NY 11967, USA



SDS-PAGE



Tel: 1-631-559-9269 1-516-512-3133

Email: info@creative-biomart.com Fax: 1-631-938-8127

45-1 Ramsey Road, Shirley, NY 11967, USA