

## Recombinant Human CLEC1A protein, hFc-tagged

**Cat. No.** CLEC1A-3530H    **Lot. No.** (See product label)

### SPECIFICATION

<b>Product Overview</b>	Recombinant Human CLEC1A protein(Q8NC01)(Gln74-Asp280), fused with N-terminal hFc tag, was expressed in HEK293.
<b>Species</b>	Human
<b>Source</b>	HEK293
<b>ProteinLength</b>	Gln74-Asp280
<b>Tag</b>	N-hFc
<b>Form</b>	Supplied as 0.22µm filtered solution in PBS (pH 7.4).
<b>Bio-activity</b>	Immobilized Human CLEC-1, hFc Tag at 0.5ug/ml (100ul/Well) on the plate. Dose response curve for Biotinylated Anti-CLEC-1 Antibody, hFc Tag with the EC50 8.8ng/ml determined by ELISA.
<b>Molecular Mass</b>	The protein has a predicted MW of 51.2 kDa. Due to glycosylation, the protein migrates to 60-70 kDa based on Tris-Bis PAGE result.
<b>Endotoxin</b>	Less than 1EU per µg by the LAL method.
<b>Purity</b>	> 95% as determined by Tris-Bis PAGE;> 95% as determined by HPLC
<b>Storage</b>	Valid for 12 months from date of receipt when stored at -80°C. Recommend to aliquot

 Tel: 1-631-559-9269    1-516-512-3133

 Email: [info@creative-biomart.com](mailto:info@creative-biomart.com)     Fax: 1-631-938-8127

 45-1 Ramsey Road, Shirley, NY 11967, USA

the protein into smaller quantities for optimal storage. Please do not repeated freeze-thaw cycles.

**Reconstitution**

It is recommended that sterile water be added to the vial to prepare a stock solution of 0.2 ug/ul. Centrifuge the vial at 4°C before opening to recover the entire contents.

## GENE INFORMATION

**Gene Name** CLEC1A C-type lectin domain family 1, member A [ Homo sapiens ]

**Official Symbol** CLEC1A

**Synonyms** CLEC1A; C-type lectin domain family 1, member A; C-type lectin domain family 1 member A; CLEC1; MGC34328; CLEC-1; C-type lectin-like receptor-1;

**Gene ID** 51267

**mRNA Refseq** NM\_016511

**Protein Refseq** NP\_057595

**MIM** 606782

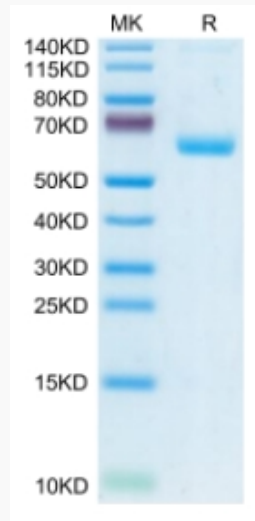
**UniProt ID** Q8NC01

 Tel: 1-631-559-9269 1-516-512-3133

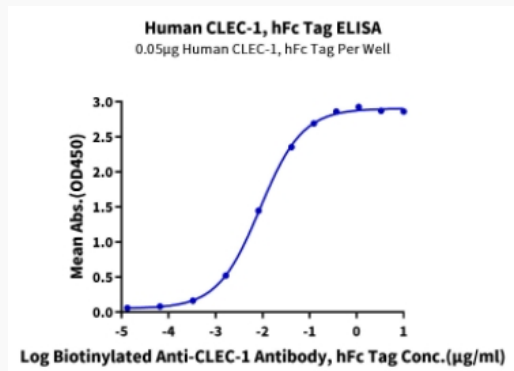
 Email: [info@creative-biomart.com](mailto:info@creative-biomart.com)  Fax: 1-631-938-8127

 45-1 Ramsey Road, Shirley, NY 11967, USA

**Tris-Bis PAGE**



**ELISA Data**



 Tel: 1-631-559-9269 1-516-512-3133

 Email: [info@creative-biomart.com](mailto:info@creative-biomart.com)  Fax: 1-631-938-8127

 45-1 Ramsey Road, Shirley, NY 11967, USA