

Recombinant Human CLEC1B Protein, GST-tagged

Cat. No. CLEC1B-1460H **Lot. No.** (See product label)

SPECIFICATION

Product Overview	Human CLEC1B full-length ORF (AAH29554.1, 1 a.a. - 196 a.a.) recombinant protein with GST-tag at N-terminal.
Species	Human
Source	Wheat Germ
Description	Natural killer (NK) cells express multiple calcium-dependent (C-type) lectin-like receptors, such as CD94 (KLRD1; MIM 602894) and NKG2D (KLRC4; MIM 602893), that interact with major histocompatibility complex class I molecules and either inhibit or activate cytotoxicity and cytokine secretion. CLEC2 is a C-type lectin-like receptor expressed in myeloid cells and NK cells (Colonna et al., 2000 [PubMed 10671229]).[supplied by OMIM, Jan 2011]
Molecular Mass	49.5 kDa
AA Sequence	MQDEDGYITLNIKTRKPALVSAVMQRNYLQDENENRTGTLQQLAKRFCQYVVKQSE LKGTFKGHKCSPCDTNWRYYGDSCYGFFRHNLTWEEKQYCTDMNATLLKIDNRNI VEYIKARTHLIRWVGLSRQKSNEVWKWEDGSVISENMFEFLEDGKGNMNCAYFHN GKMHPTFCENKHYLMCERKAGMTKVDQLP
Applications	Enzyme-linked Immunoabsorbent Assay Western Blot (Recombinant protein) Antibody Production Protein Array

 Tel: 1-631-559-9269 1-516-512-3133

 Email: info@creative-biomart.com  Fax: 1-631-938-8127

 45-1 Ramsey Road, Shirley, NY 11967, USA

Notes	Best use within three months from the date of receipt of this protein.
Storage	Store at -80 centigrade. Aliquot to avoid repeated freezing and thawing.
Storage Buffer	50 mM Tris-HCl, 10 mM reduced Glutathione, pH=8.0 in the elution buffer.

GENE INFORMATION

Gene Name	CLEC1B C-type lectin domain family 1, member B [Homo sapiens]
Official Symbol	CLEC1B
Synonyms	CLEC1B; C-type lectin domain family 1, member B; C-type lectin domain family 1 member B; CLEC2; CLEC-2; C-type lectin-like receptor 2; C-type lectin-like receptor-2; CLEC2B; PRO1384; QDED721; 1810061I13Rik;
Gene ID	51266
mRNA Refseq	NM_001099431
Protein Refseq	NP_001092901
MIM	606783
UniProt ID	Q9P126

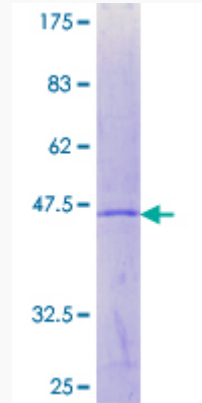
 Tel: 1-631-559-9269 1-516-512-3133

 Email: info@creative-biomart.com  Fax: 1-631-938-8127

 45-1 Ramsey Road, Shirley, NY 11967, USA

Quality Control

Testing:



12.5% SDS-PAGE Stained with Coomassie Blue.

 Tel: 1-631-559-9269 1-516-512-3133

 Email: info@creative-biomart.com  Fax: 1-631-938-8127

 45-1 Ramsey Road, Shirley, NY 11967, USA