

Active Recombinant Human CLEC1B protein, His-tagged

Cat. No. CLEC1B-6911H Lot. No. (See product label)

SPECIFICATION

| | |
|-------------------------|--|
| Product Overview | Active Recombinant Human CLEC1B protein(NP_057593.3)(Gln 58- 229) with a N-terminal polyhistidine tag was expressed in HEK293. |
| Species | Human |
| Source | HEK293 |
| ProteinLength | 58-229 aa |
| Form | Lyophilized from sterile PBS, pH 7.4. |
| Bio-activity | Measured by its binding ability in a functional ELISA. Immobilized human Podoplanin at 10 µg/mL (100 µl/well) can bind biotinylated human CLEC1B-His, The EC50 of biotinylated human CLEC1B-His is 0.71 µg/mL. |
| Molecular Mass | The recombinant human CLEC1B comprises 188 amino acids with a predicted molecular mass of 22.7 kDa. As a result of glycosylation, the apparent molecular mass of rh CLEC1B is approximately 35-38 kDa in SDS-PAGE under reducing conditions. |
| Endotoxin | < 1.0 EU per µg of the protein as determined by the LAL method. |
| Purity | > 76 % as determined by SDS-PAGE |
| Storage | Store it under sterile conditions at -20°C to -80°C upon receiving. Recommend to |

 Tel: 1-631-559-9269 1-516-512-3133

 Email: info@creative-biomart.com  Fax: 1-631-938-8127

 45-1 Ramsey Road, Shirley, NY 11967, USA

aliquot the protein into smaller quantities for optimal storage. Avoid repeated freeze-thaw cycles.

Reconstitution

It is recommended that sterile water be added to the vial to prepare a stock solution of 0.2 ug/ul. Centrifuge the vial at 4°C before opening to recover the entire contents.

protein Refseq-Weblink

http://www.ncbi.nlm.nih.gov/protein/NP_001092901.1

Unit ID

Q9P126

Unit ID-Weblink

<http://www.uniprot.org/uniprot/Q9P126>

GENE INFORMATION

Gene Name

CLEC1B C-type lectin domain family 1, member B [Homo sapiens]

Official Symbol

CLEC1B

Synonyms

CLEC1B; C-type lectin domain family 1, member B; C-type lectin domain family 1 member B; CLEC2; CLEC-2; C-type lectin-like receptor 2; C-type lectin-like receptor-2; CLEC2B; PRO1384; QDED721; 1810061113Rik;

Gene ID

51266

mRNA Refseq

NM_001099431

protein Refseq

NP_001092901

MIM

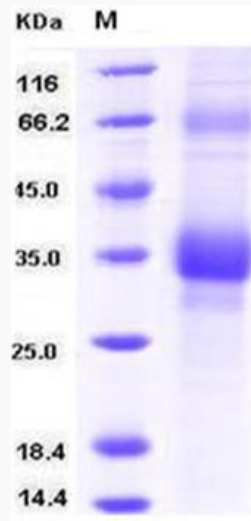
606783

 Tel: 1-631-559-9269 1-516-512-3133

 Email: info@creative-biomart.com  Fax: 1-631-938-8127

 45-1 Ramsey Road, Shirley, NY 11967, USA

SDS-PAGE



 Tel: 1-631-559-9269 1-516-512-3133

 Email: info@creative-biomart.com  Fax: 1-631-938-8127

 45-1 Ramsey Road, Shirley, NY 11967, USA