

Recombinant Human CLEC2A Protein, Myc/DDK-tagged, C13 and N15-labeled

Cat. No. CLEC2A-3165H **Lot. No.** (See product label)

SPECIFICATION

Product Overview	CLEC2A MS Standard C13 and N15-labeled recombinant protein (NP_001124183) with a C-terminal MYC/DDK tag, was expressed in HEK293 cells.
Species	Human
Source	HEK293
Description	CLEC2A belongs to the CLEC2 family of activation-induced, natural killer gene complex-encoded C-type lectin-like receptors.
Molecular Mass	19.8 kDa
AA Sequence	MINPELRDGRADGFIHRIVPKLIQNWKIGLMCFLSIIITTVCIIMIATWSKHAKPVACSGD WLGVRDKCFYFSDTRNWTASKIFCSLQKAELAQIDTQEDMEFLKRYAGTDMHWIG LSRKQGDSWKWTNGTTFNGWFEIIGNGSFAFLSADGVHSSRGFIDIKWICKPKYFL TRTRPLEQKLISEEDLAANDILDYKDDDDKV
Purity	> 80% as determined by SDS-PAGE and Coomassie blue staining
Stability	Stable for 3 months from receipt of products under proper storage and handling conditions.
Storage	Store at -80 centigrade. Avoid repeated freeze-thaw cycles.

 Tel: 1-631-559-9269 1-516-512-3133

 Email: info@creative-biomart.com  Fax: 1-631-938-8127

 45-1 Ramsey Road, Shirley, NY 11967, USA

Concentration 50 µg/mL as determined by BCA

Storage Buffer 100 mM glycine, 25 mM Tris-HCl, pH 7.3.

GENE INFORMATION

Gene Name CLEC2A C-type lectin domain family 2 member A [Homo sapiens (human)]

Official Symbol CLEC2A

Synonyms

CLEC2A; C-type lectin domain family 2, member A; C-type lectin domain family 2 member A; INPE5792; KACL; keratinocyte associated C type lectin; PILAR; proliferation induced lymphocyte associated receptor; UNQ5792; keratinocyte-associated C-type lectin; proliferation-induced lymphocyte-associated receptor;

Gene ID 387836

mRNA Refseq NM_001130711

Protein Refseq NP_001124183

MIM 612087

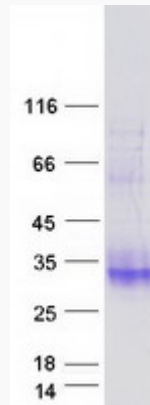
UniProt ID Q6UVW9

 Tel: 1-631-559-9269 1-516-512-3133

 Email: info@creative-biomart.com  Fax: 1-631-938-8127

 45-1 Ramsey Road, Shirley, NY 11967, USA

SDS-PAGE



 Tel: 1-631-559-9269 1-516-512-3133

 Email: info@creative-biomart.com  Fax: 1-631-938-8127

 45-1 Ramsey Road, Shirley, NY 11967, USA