

Recombinant Human CLEC2D Protein, GST-tagged

Cat. No. CLEC2D-1464H Lot. No. (See product label)

SPECIFICATION

| | |
|-------------------------|---|
| Product Overview | Human CLEC2D full-length ORF (AAH19883, 1 a.a. - 154 a.a.) recombinant protein with GST-tag at N-terminal. |
| Species | Human |
| Source | Wheat Germ |
| Description | This gene encodes a member of the natural killer cell receptor C-type lectin family. The encoded protein inhibits osteoclast formation and contains a transmembrane domain near the N-terminus as well as the C-type lectin-like extracellular domain. Several alternatively spliced transcript variants have been identified for this gene. [provided by RefSeq, Oct 2010] |
| Molecular Mass | 42.68 kDa |
| AA Sequence | MHDSNNVEKDITPSELPANPGCVHSKEHSIKATLIWRLFFLIMFLTIIVCGMVAALS AIR ANCHQEPSVCLQAACPESWIGFQRKCFYFSDDTKNWTSSQRFCDSQDADLAQVES FQELNFLRLRYKGPSDHWIGLSREQQQPWKWINGTEWTRQ |
| Applications | Enzyme-linked Immunoabsorbent Assay Western Blot (Recombinant protein) Antibody Production Protein Array |
| Notes | Best use within three months from the date of receipt of this protein. |

 Tel: 1-631-559-9269 1-516-512-3133

 Email: info@creative-biomart.com  Fax: 1-631-938-8127

 45-1 Ramsey Road, Shirley, NY 11967, USA

| | |
|-------------------------|---|
| Storage | Store at -80 centigrade. Aliquot to avoid repeated freezing and thawing. |
| Storage Buffer | 50 mM Tris-HCl, 10 mM reduced Glutathione, pH=8.0 in the elution buffer. |
| GENE INFORMATION | |
| Gene Name | CLEC2D C-type lectin domain family 2, member D [Homo sapiens] |
| Official Symbol | CLEC2D |
| Synonyms | CLEC2D; C-type lectin domain family 2, member D; C type lectin superfamily 2, member D; C-type lectin domain family 2 member D; C type lectin related f; CLAX; lectin like transcript 1; LLT1; OCIL; LLT-1; C-type lectin related f; lectin-like transcript 1; lectin-like NK cell receptor; osteoclast inhibitory lectin; C-type lectin superfamily 2, member D; |
| Gene ID | 29121 |
| mRNA Refseq | NM_001004419 |
| Protein Refseq | NP_001004419 |
| MIM | 605659 |
| UniProt ID | Q9UHP7 |

 Tel: 1-631-559-9269 1-516-512-3133

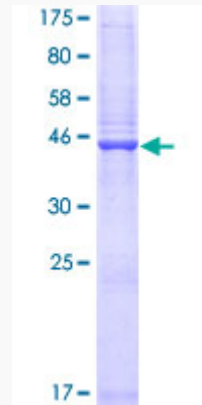
 Email: info@creative-biomart.com  Fax: 1-631-938-8127

 45-1 Ramsey Road, Shirley, NY 11967, USA



Quality Control

Testing:



12.5% SDS-PAGE Stained with Coomassie Blue.

Tel: 1-631-559-9269 1-516-512-3133

Email: info@creative-biomart.com Fax: 1-631-938-8127

45-1 Ramsey Road, Shirley, NY 11967, USA