

Recombinant Human CLEC2D protein, hFc-Avi-tagged, Biotinylated

Cat. No. CLEC2D-329HB **Lot. No.** (See product label)

SPECIFICATION

Product Overview	Biotinylated Recombinant Human CLEC2D Protein(Q9UHP7-1)(Arg60-Val191) is expressed from HEK293 with hFc tag and Avi tag at the N-terminal.
Species	Human
Source	HEK293
ProteinLength	Arg60-Val191
Form	Lyophilized from 0.22µm filtered solution in PBS (pH 7.4). Normally 8% trehalose is added as protectant before lyophilization.
Molecular Mass	The protein has a predicted MW of 59.1 kDa. Due to glycosylation, the protein migrates to 68-75 kDa based on Tris-Bis PAGE result.
Endotoxin	Less than 1EU per µg by the LAL method.
Purity	> 95% as determined by Tris-Bis PAGE > 95% as determined by HPLC
Storage	-20 to -80°C for 12 months as supplied from date of receipt. -20 to -80°C for 3-6 months in unopened state after reconstitution. 4-8°C for 2-7 days after reconstitution. Recommend to aliquot the protein into smaller quantities for optimal storage. Please

 Tel: 1-631-559-9269 1-516-512-3133

 Email: info@creative-biomart.com  Fax: 1-631-938-8127

 45-1 Ramsey Road, Shirley, NY 11967, USA

avoid freeze-thaw cycles.AC7

Reconstitution

Centrifuge tubes before opening. Reconstituting to a concentration more than 100 µg/ml is recommended (usually we use 1mg/ml solution for lyophilization). Dissolve the lyophilized protein in distilled water.

Conjugation

Biotin

GENE INFORMATION

Gene Name

CLEC2D C-type lectin domain family 2, member D [Homo sapiens]

Official Symbol

CLEC2D

Synonyms

CLEC2D; C-type lectin domain family 2, member D; C type lectin superfamily 2, member D; C-type lectin domain family 2 member D; C type lectin related f; CLAX; lectin like transcript 1; LLT1; OCIL; LLT-1; C-type lectin related f; lectin-like transcript 1; lectin-like NK cell receptor; osteoclast inhibitory lectin; C-type lectin superfamily 2, member D;

Gene ID

29121

mRNA Refseq

NM_001004419

Protein Refseq

NP_001004419

MIM

605659

UniProt ID

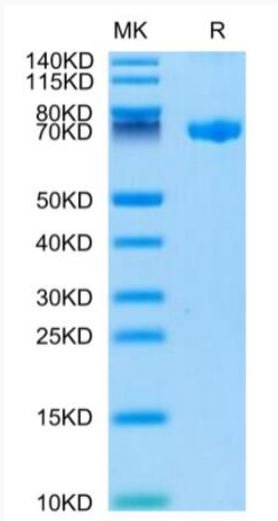
Q9UHP7

 Tel: 1-631-559-9269 1-516-512-3133

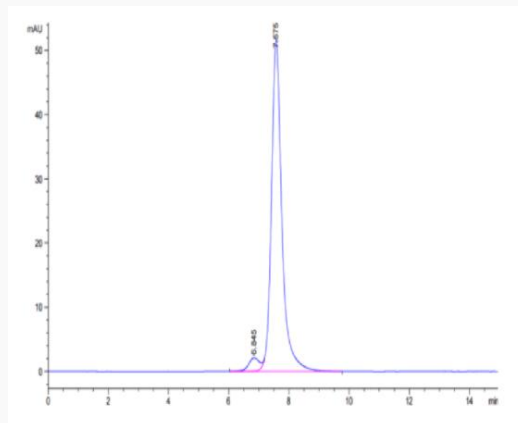
 Email: info@creative-biomart.com  Fax: 1-631-938-8127

 45-1 Ramsey Road, Shirley, NY 11967, USA

SDS-PAGE



SEC-HPLC



 Tel: 1-631-559-9269 1-516-512-3133

 Email: info@creative-biomart.com  Fax: 1-631-938-8127

 45-1 Ramsey Road, Shirley, NY 11967, USA