

Recombinant Human CLEC2D Protein, Myc/DDK-tagged, C13 and N15-labeled

Cat. No. CLEC2D-6077H Lot. No. (See product label)

SPECIFICATION

Product Overview	CLEC2D MS Standard C13 and N15-labeled recombinant protein (NP_001004419) with a C-terminal MYC/DDK tag, was expressed in HEK293 cells.
Species	Human
Source	HEK293
Description	This gene encodes a member of the natural killer cell receptor C-type lectin family. The encoded protein inhibits osteoclast formation and contains a transmembrane domain near the N-terminus as well as the C-type lectin-like extracellular domain. Several alternatively spliced transcript variants have been identified for this gene.
Molecular Mass	22.1 kDa
AA Sequence	MHDSNNVEKDITPSELPANPGCLHSKEHSIKATLIWRLFFLIMFLTIIVCGMVAALSAIR ANCHQEPSVCLQAACPESWIGFQRKCFYFSDDTKNWTSSQRFCDSDADLAQVES FQELNLLRYKGPSDHWIGLSREQQQPWKWINGTEWTRQLVMKEDGANLYVAKVS QVPRMNRPRVMVSYPGSRRVCLFETRTRPLEQKLISEEDLAANDILDYKDDDDKV
Purity	> 80% as determined by SDS-PAGE and Coomassie blue staining
Stability	Stable for 3 months from receipt of products under proper storage and handling conditions.

 Tel: 1-631-559-9269 1-516-512-3133

 Email: info@creative-biomart.com  Fax: 1-631-938-8127

 45-1 Ramsey Road, Shirley, NY 11967, USA

Storage	Store at -80 centigrade. Avoid repeated freeze-thaw cycles.
Concentration	50 µg/mL as determined by BCA
Storage Buffer	100 mM glycine, 25 mM Tris-HCl, pH 7.3.
GENE INFORMATION	
Gene Name	CLEC2D C-type lectin domain family 2 member D [Homo sapiens (human)]
Official Symbol	CLEC2D
Synonyms	CLEC2D; C-type lectin domain family 2, member D; C type lectin superfamily 2, member D; C-type lectin domain family 2 member D; C type lectin related f; CLAX; lectin like transcript 1; LLT1; OCIL; LLT-1; C-type lectin related f; lectin-like transcript 1; lectin-like NK cell receptor; osteoclast inhibitory lectin; C-type lectin superfamily 2, member D;
Gene ID	29121
mRNA Refseq	NM_001004419
Protein Refseq	NP_001004419
MIM	605659
UniProt ID	Q9UHP7

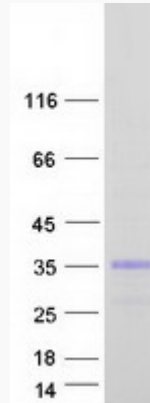
 Tel: 1-631-559-9269 1-516-512-3133

 Email: info@creative-biomart.com  Fax: 1-631-938-8127

 45-1 Ramsey Road, Shirley, NY 11967, USA



SDS-PAGE



Tel: 1-631-559-9269 1-516-512-3133

Email: info@creative-biomart.com Fax: 1-631-938-8127

45-1 Ramsey Road, Shirley, NY 11967, USA