

Recombinant Full Length Human CLEC2D Protein, C-Flag-tagged

Cat. No. CLEC2D-612HFL **Lot. No.** (See product label)

SPECIFICATION

Product Overview	Recombinant Full Length Human CLEC2D Protein, fused to Flag-tag at C-terminus, was expressed in Mammalian cells.
Species	Human
Source	Mammalian Cells
Description	This gene encodes a member of the natural killer cell receptor C-type lectin family. The encoded protein inhibits osteoclast formation and contains a transmembrane domain near the N-terminus as well as the C-type lectin-like extracellular domain. Several alternatively spliced transcript variants have been identified for this gene.
Form	25 mM Tris HCl, pH 7.3, 100 mM glycine, 10% glycerol.
Molecular Mass	22.1 kDa
AA Sequence	MHDSNNVEKDITPSELPANPGCLHSKEHSIKATLIWRLFFLIMFLTIIVCGMVAALSAIR ANCHQEPSVC LQAACPESWIGFQRKCFYFSDDTKNWTSSQRFCDSDADLAQVE SFQELNFLRLRYKGPSDHWIGLSREQG QPWKWINGTEWTRQLVMKEDGANLYVAKVSQVPRMNPVPMVSYPGSRRVCLFE TRTRPLEQKLISEEDLAANDILDYKDDDDKV
Purity	> 80% as determined by SDS-PAGE and Coomassie blue staining.

 Tel: 1-631-559-9269 1-516-512-3133

 Email: info@creative-biomart.com  Fax: 1-631-938-8127

 45-1 Ramsey Road, Shirley, NY 11967, USA

Stability	Stable for 12 months from the date of receipt of the product under proper storage and handling conditions. Avoid repeated freeze-thaw cycles.
Storage	Store at -80 centigrade.
Concentration	>50 ug/mL as determined by microplate BCA method.
Preparation	Recombinant protein was captured through anti-DDK affinity column followed by conventional chromatography steps.
Protein Families	Druggable Genome, Transmembrane
Full Length	Full L.

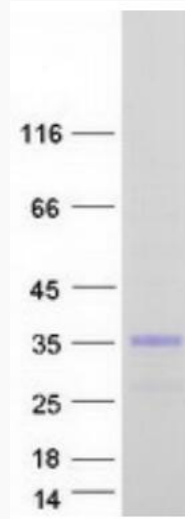
GENE INFORMATION

Gene Name	CLEC2D C-type lectin domain family 2 member D [Homo sapiens (human)]
Official Symbol	CLEC2D
Synonyms	CLAX; LLT1; OCIL
Gene ID	29121
mRNA Refseq	NM_001004419.5
Protein Refseq	NP_001004419.1
MIM	605659
UniProt ID	Q9UHP7

 Tel: 1-631-559-9269 1-516-512-3133

 Email: info@creative-biomart.com  Fax: 1-631-938-8127

 45-1 Ramsey Road, Shirley, NY 11967, USA



Coomassie blue staining of purified CLEC2D protein.

 Tel: 1-631-559-9269 1-516-512-3133

 Email: info@creative-biomart.com  Fax: 1-631-938-8127

 45-1 Ramsey Road, Shirley, NY 11967, USA