

# Recombinant Human CLEC3B Protein (Glu22-Val202), C-His tagged

Cat. No. CLEC3B-2210H Lot. No. (See product label)

## SPECIFICATION

<b>Product Overview</b>	Recombinant human CLEC3B (Glu22-Val202) fused with C-terminal His tag was expressed in Mammalian cells.
<b>Species</b>	Human
<b>Source</b>	Mammalian Cells
<b>ProteinLength</b>	Glu22-Val202
<b>Form</b>	Lyophilized powder/frozen liquid
<b>Molecular Mass</b>	19.91 kDa
<b>Purity</b>	>90% as determined by SDS-PAGE
<b>Notes</b>	For research use only.
<b>Storage</b>	Use a manual defrost freezer and avoid repeated freeze thaw cycles. Store at 2 to 8 centigrade for one week. Store at -20 to -80 centigrade for twelve months from the date of receipt.
<b>Storage Buffer</b>	Supplied as solution form in PBS or lyophilized from PBS.
<b>Reconstitution</b>	Reconstitute in sterile water for a stock solution.

 Tel: 1-631-559-9269 1-516-512-3133

 Email: [info@creative-biomart.com](mailto:info@creative-biomart.com)  Fax: 1-631-938-8127

 45-1 Ramsey Road, Shirley, NY 11967, USA

**Shipping** They are shipped out with dry ice/blue ice unless customers require otherwise.

## GENE INFORMATION

**Gene Name** CLEC3B C-type lectin domain family 3, member B [ Homo sapiens (human) ]

**Official Symbol** CLEC3B

**Synonyms** CLEC3B; C-type lectin domain family 3, member B; tetranectin (plasminogen binding protein), TNA; tetranectin; TN; plasminogen kringle 4-binding protein; tetranectin (plasminogen binding protein); tetranectin (plasminogen-binding protein); TNA; DKFZp686H17246;

**Gene ID** 7123

**mRNA Refseq** NM\_003278

**Protein Refseq** NP\_003269

**MIM** 187520

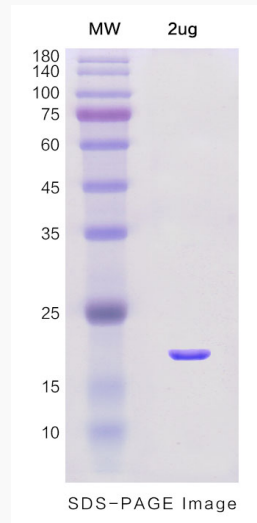
**UniProt ID** P05452

 Tel: 1-631-559-9269 1-516-512-3133

 Email: [info@creative-biomart.com](mailto:info@creative-biomart.com)  Fax: 1-631-938-8127

 45-1 Ramsey Road, Shirley, NY 11967, USA

**SDS-PAGE**



 Tel: 1-631-559-9269 1-516-512-3133

 Email: [info@creative-biomart.com](mailto:info@creative-biomart.com)  Fax: 1-631-938-8127

 45-1 Ramsey Road, Shirley, NY 11967, USA