

Recombinant Human CLEC3B protein, His-tagged, low endotoxin

Cat. No. CLEC3B-5642H Lot. No. (See product label)

SPECIFICATION

Product Overview

Recombinant Human CLEC3B (Glu22-Val202) protein (low endotoxin) was fused to His-tag at C-terminus and expressed in human 293 cells (HEK293).

Species

Human

Source

HEK293

ProteinLength

Glu22-Val202

Description

C-type lectin domain family 3 member B (CLEC3B) is also known as Tetranectin, Plasminogen kringle 4-binding protein, is a secreted homotrimer. CLEC3B contains 1 C-type lectin domain and mainly found in plasma. Tetranectin/CLEC3B binds to plasminogen and to isolated kringle 4. CLEC3B may be involved in the packaging of molecules destined for exocytosis. Decreased plasma Tetranectin or increased Tetranectin in stroma of cancers correlates with cancer progression and adverse prognosis.

Predicted N Terminal

Glu22

Form


Lyophilized from 0.22 µm filtered solution in PBS, pH7.4, 10% trehalose.

Molecular Mass

The protein has a calculated MW of 21 kDa. The protein migrates as 22 kDa under reducing (R) condition (SDS-PAGE) due to glycosylation.

 Tel: 1-631-559-9269 1-516-512-3133

 Email: info@creative-biomart.com  Fax: 1-631-938-8127

 45-1 Ramsey Road, Shirley, NY 11967, USA

Endotoxin	Less than 0.1 EU per µg by the LAL method.
Purity	>95% as determined by SDS-PAGE.
Storage	<p>For long term storage, the product should be stored at lyophilized state at -20 centigrade or lower.</p> <p>Please avoid repeated freeze-thaw cycles.</p> <p>This product is stable after storage at:</p> <p>-20 to -70 centigrade for 12 months in lyophilized state; -70 centigrade for 3 months under sterile conditions after reconstitution.</p>
Reconstitution	It is recommended that sterile water be added to the vial to prepare a stock solution of 0.2 ug/ul. Centrifuge the vial at 4°C before opening to recover the entire contents.

GENE INFORMATION

Gene Name	CLEC3B
Official Symbol	CLEC3B
Synonyms	CLEC3B; C-type lectin domain family 3, member B; tetranectin (plasminogen binding protein) , TNA; tetranectin; TN; plasminogen kringle 4-binding protein; tetranectin (plasminogen binding protein); tetranectin (plasminogen-binding protein); TNA; DKFZp686H17246
Gene ID	7123
mRNA Refseq	NM_003278
Protein Refseq	NP_003269

 Tel: 1-631-559-9269 1-516-512-3133

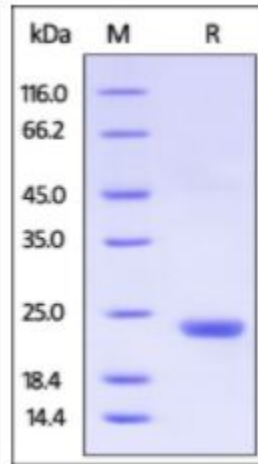
 Email: info@creative-biomart.com  Fax: 1-631-938-8127

 45-1 Ramsey Road, Shirley, NY 11967, USA

MIM 187520

UniProt ID P05452

**SDS-PAGE of
CLEC3B-5642H**



Human CLEC3B, His Tag on SDS-PAGE under reducing (R) condition. The gel was stained overnight with Coomassie Blue. The purity of the protein is greater than 95%.

 Tel: 1-631-559-9269 1-516-512-3133

 Email: info@creative-biomart.com  Fax: 1-631-938-8127

 45-1 Ramsey Road, Shirley, NY 11967, USA