

Recombinant Human CLEC4A Protein, GST-tagged

Cat. No. CLEC4A-1467H **Lot. No.** (See product label)

SPECIFICATION

Product Overview Human CLEC4A full-length ORF (NP_057268.1, 1 a.a. - 237 a.a.) recombinant protein with GST-tag at N-terminal.

Species Human

Source Wheat Germ

Description This gene encodes a member of the C-type lectin/C-type lectin-like domain (CTL/CTLD) superfamily. Members of this family share a common protein fold and have diverse functions, such as cell adhesion, cell-cell signalling, glycoprotein turnover, and roles in inflammation and immune response. The encoded type 2 transmembrane protein may play a role in inflammatory and immune response. Multiple transcript variants encoding distinct isoforms have been identified for this gene. This gene is closely linked to other CTL/CTLD superfamily members on chromosome 12p13 in the natural killer gene complex region. [provided by RefSeq, Jul 2008]

Molecular Mass 53.9 kDa

AA Sequence MTSEITYAEVRFKNEFKSSGINTASSAASKERTAPHKSNTGFPKLLCASLLIFFLLLAIS
FFIAFVIFVQKYSQLEKKTTELVTHTLECVKKNMPVEETAWSCCPKNWKSFSSNC
YFISTESASWQDSEKDCARMEHLLVINTQEEQDFIFQNLQEESAYFVGLSDPEGQR
HWQWVDQTPYNESSTFWHPREPSDPNERCVVLNFRKSPKRWGWNDVNCLGPQR
SVCEMMKIHL

 Tel: 1-631-559-9269 1-516-512-3133

 Email: info@creative-biomart.com  Fax: 1-631-938-8127

 45-1 Ramsey Road, Shirley, NY 11967, USA

Applications	Enzyme-linked Immunoabsorbent Assay Western Blot (Recombinant protein) Antibody Production Protein Array
Notes	Best use within three months from the date of receipt of this protein.
Storage	Store at -80 centigrade. Aliquot to avoid repeated freezing and thawing.
Storage Buffer	50 mM Tris-HCl, 10 mM reduced Glutathione, pH=8.0 in the elution buffer.

GENE INFORMATION

Gene Name	CLEC4A C-type lectin domain family 4, member A [Homo sapiens]
Official Symbol	CLEC4A
Synonyms	CLEC4A; C-type lectin domain family 4, member A; C type (calcium dependent, carbohydrate recognition domain) lectin, superfamily member 6 , CLECSF6; C-type lectin domain family 4 member A; DCIR; DDB27; C-type lectin DDB27; lectin-like immunoreceptor; dendritic cell immunoreceptor; C-type lectin superfamily member 6; C-type (calcium dependent, carbohydrate-recognition domain) lectin, superfamily member 6; LLIR; CLECSF6; HDCGC13P;
Gene ID	50856
mRNA Refseq	NM_016184
Protein Refseq	NP_057268
MIM	605306

 Tel: 1-631-559-9269 1-516-512-3133

 Email: info@creative-biomart.com  Fax: 1-631-938-8127

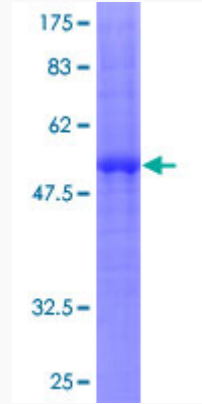
 45-1 Ramsey Road, Shirley, NY 11967, USA

UniProt ID

Q9UMR7

Quality Control

Testing:



12.5% SDS-PAGE Stained with Coomassie Blue.

 Tel: 1-631-559-9269 1-516-512-3133

 Email: info@creative-biomart.com  Fax: 1-631-938-8127

 45-1 Ramsey Road, Shirley, NY 11967, USA