

## Recombinant Human CLEC4A protein, rFc-tagged

Cat. No. CLEC4A-3789H Lot. No. (See product label)

### SPECIFICATION

<b>Product Overview</b>	Recombinant Human CLEC4A protein(Q9UMR7-1)(Gln70-Leu237), fused with N-terminal rFc tag, was expressed in HEK293.
<b>Species</b>	Human
<b>Source</b>	HEK293
<b>Form</b>	Lyophilized from 0.22 µm filtered solution in PBS, pH 7.4. Normally 5% trehalose and 5% mannitol are added as protectants before lyophilization.
<b>Molecular Mass</b>	47.1 kDa
<b>Endotoxin</b>	<0.1 EU/µg protein, LAL method
<b>Purity</b>	>95 %, SDS-PAGE
<b>Storage</b>	It is recommended that the protein be aliquoted for optimal storage. Avoid repeated freeze-thaw cycles. Until expiry date, -20°C to -80°C as lyophilized proteins. 3 months, -20°C to -80°C under sterile conditions after reconstitution.
<b>Reconstitution</b>	Briefly centrifuge the tube before opening. Reconstitute at 0.1-0.5 mg/mL in sterile water.

### GENE INFORMATION

 Tel: 1-631-559-9269 1-516-512-3133

 Email: [info@creative-biomart.com](mailto:info@creative-biomart.com)  Fax: 1-631-938-8127

 45-1 Ramsey Road, Shirley, NY 11967, USA

<b>Gene Name</b>	CLEC4A C-type lectin domain family 4, member A [ Homo sapiens ]
<b>Official Symbol</b>	CLEC4A
<b>Synonyms</b>	CLEC4A; C-type lectin domain family 4, member A; C type (calcium dependent, carbohydrate recognition domain) lectin, superfamily member 6 , CLECSF6; C-type lectin domain family 4 member A; DCIR; DDB27; C-type lectin DDB27; lectin-like immunoreceptor; dendritic cell immunoreceptor; C-type lectin superfamily member 6; C-type (calcium dependent, carbohydrate-recognition domain) lectin, superfamily member 6; LLIR; CLECSF6; HDCGC13P;
<b>Gene ID</b>	50856
<b>mRNA Refseq</b>	NM_016184
<b>Protein Refseq</b>	NP_057268
<b>MIM</b>	605306
<b>UniProt ID</b>	Q9UMR7

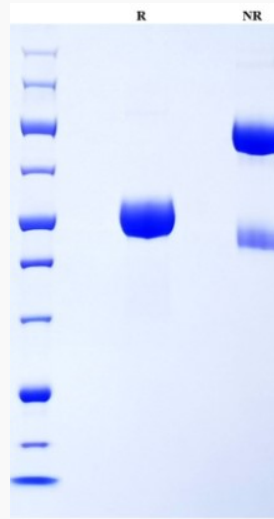
 Tel: 1-631-559-9269 1-516-512-3133

 Email: [info@creative-biomart.com](mailto:info@creative-biomart.com)  Fax: 1-631-938-8127

 45-1 Ramsey Road, Shirley, NY 11967, USA



SDS-PAGE



Tel: 1-631-559-9269 1-516-512-3133

Email: [info@creative-biomart.com](mailto:info@creative-biomart.com) Fax: 1-631-938-8127

45-1 Ramsey Road, Shirley, NY 11967, USA