

Recombinant Human CLEC4A Protein, His-tagged

Cat. No. CLEC4A-796H Lot. No. (See product label)

SPECIFICATION

Product Overview	Recombinant Human CLEC4A Protein (Gln70-Leu237) with His tag was expressed in E. coli.
Species	Human
Source	E.coli
ProteinLength	Gln70-Leu237
Description	This gene encodes a member of the C-type lectin/C-type lectin-like domain (CTL/CTLD) superfamily. Members of this family share a common protein fold and have diverse functions, such as cell adhesion, cell-cell signalling, glycoprotein turnover, and roles in inflammation and immune response. The encoded type 2 transmembrane protein may play a role in inflammatory and immune response. Multiple transcript variants encoding distinct isoforms have been identified for this gene. This gene is closely linked to other CTL/CTLD superfamily members on chromosome 12p13 in the natural killer gene complex region.
Form	Freeze-dried powder
Molecular Mass	Predicted Molecular Mass: 23.6 kDa; Accurate Molecular Mass: 26 kDa
Purity	> 95%
Applications	Positive Control; Immunogen; SDS-PAGE; WB.

 Tel: 1-631-559-9269 1-516-512-3133

 Email: info@creative-biomart.com  Fax: 1-631-938-8127

 45-1 Ramsey Road, Shirley, NY 11967, USA

Stability	The thermal stability is described by the loss rate. The loss rate was determined by accelerated thermal degradation test, that is, incubate the protein at 37 centigrade for 48h, and no obvious degradation and precipitation were observed. The loss rate is less than 5% within the expiration date under appropriate storage condition.
Storage	Avoid repeated freeze/thaw cycles. Store at 2-8 centigrade for one month. Aliquot and store at -80 centigrade for 12 months.
Storage Buffer	PBS, pH7.4, containing 0.01% SKL, 1mM DTT, 5% Trehalose and Proclin300.
Reconstitution	Reconstitute in 20mM Tris, 150mM NaCl (pH8.0) to a concentration of 0.1-1.0 mg/mL. Do not vortex.

GENE INFORMATION

Gene Name	CLEC4A C-type lectin domain family 4, member A [Homo sapiens (human)]
Official Symbol	CLEC4A
Synonyms	CLEC4A; C-type lectin domain family 4, member A; C type (calcium dependent, carbohydrate recognition domain) lectin, superfamily member 6, CLECSF6; C-type lectin domain family 4 member A; DCIR; DDB27; C-type lectin DDB27; lectin-like immunoreceptor; dendritic cell immunoreceptor; C-type lectin superfamily member 6; C-type (calcium dependent, carbohydrate-recognition domain) lectin, superfamily member 6; LLIR; CLECSF6; HDCGC13P;
Gene ID	50856
mRNA Refseq	NM_016184
Protein Refseq	NP_057268

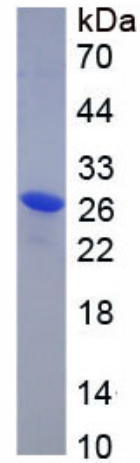
 Tel: 1-631-559-9269 1-516-512-3133

 Email: info@creative-biomart.com  Fax: 1-631-938-8127

 45-1 Ramsey Road, Shirley, NY 11967, USA

MIM 605306

UniProt ID Q9UMR7



Tel: 1-631-559-9269 1-516-512-3133

Email: info@creative-biomart.com Fax: 1-631-938-8127

45-1 Ramsey Road, Shirley, NY 11967, USA