

Recombinant Human CLEC4C Protein, His-tagged

Cat. No. CLEC4C-026H Lot. No. (See product label)

SPECIFICATION

Product Overview	Recombinant Human CLEC4C Protein with His tag was expressed in E. coli.
Species	Human
Source	E.coli
Description	Lectin-type cell surface receptor which may play a role in antigen capturing by dendritic cells. Specifically recognizes non-sialylated galactose-terminated biantennary glycans containing the trisaccharide epitope Gal(beta1-3/4)GlcNAc(beta1-2)Man. Binds to serum IgG. Efficiently targets ligand into antigen-processing and peptide-loading compartments for presentation to T-cells. May mediate potent inhibition of induction of IFN-alpha/beta expression in plasmacytoid dendritic cells. May act as a signaling receptor that activates protein-tyrosine kinases and mobilizes intracellular calcium.
Molecular Mass	~23 kDa
AA Sequence	NFMYSKTVKRLSKLREYQQYHPSLTCVMEGKDIEDWSCCPTPWTSFQSSCYFISTG MQSWTKSQKNCSVMGADLVVINTREEQDFIIQNLKRNSSYFLGLSDPGGRRHWQW VDQTPYNENVTFWHSGEPPNLDERCAIIFRSSEEWGWNDIHCHVPQKSICKMKKI YI
Purity	Transferred into competent cells and the supernatant was purified by NI column affinity chromatography and the purity is > 85% (by SDS-PAGE).
Notes	For research use only, not for use in diagnostic procedure.

 Tel: 1-631-559-9269 1-516-512-3133

 Email: info@creative-biomart.com  Fax: 1-631-938-8127

 45-1 Ramsey Road, Shirley, NY 11967, USA

Storage	Store at 4 centigrade short term. Aliquot and store at -20 centigrade long term. Avoid freeze-thaw cycles.
----------------	--

Storage Buffer	PBS, 4M Urea, pH7.4
-----------------------	---------------------

GENE INFORMATION

Gene Name	CLEC4C C-type lectin domain family 4, member C [Homo sapiens (human)]
------------------	---

Official Symbol	CLEC4C
------------------------	--------

Synonyms	DLEC; HECL; BDCA2; CD303; CLECSF7; CLECSF11; PRO34150
-----------------	---

Gene ID	170482
----------------	--------

mRNA Refseq	NM_203503
--------------------	-----------

Protein Refseq	NP_987099
-----------------------	-----------

MIM	606677
------------	--------

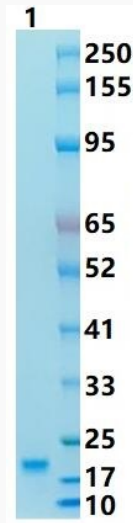
UniProt ID	Q8WTT0
-------------------	--------

 Tel: 1-631-559-9269 1-516-512-3133

 Email: info@creative-biomart.com  Fax: 1-631-938-8127

 45-1 Ramsey Road, Shirley, NY 11967, USA

SDS-PAGE



 Tel: 1-631-559-9269 1-516-512-3133

 Email: info@creative-biomart.com  Fax: 1-631-938-8127

 45-1 Ramsey Road, Shirley, NY 11967, USA