

Recombinant Human CLEC4C protein, His-tagged

Cat. No. CLEC4C-1368H Lot. No. (See product label)

SPECIFICATION

Product Overview	Recombinant Human CLEC4C protein(Q8WTT0-1)(Phe46-Ile213), fused with N-terminal His tag, was expressed in HEK293.
Species	Human
Source	N-His
ProteinLength	Phe46-Ile213
Tag	N-His
Form	Supplied as 0.22µm filtered solution in 20mMTris, 300mM NaCl, 200mM L-Arginine PH (pH 8.5).
Bio-activity	Immobilized Human BDCA-2, His Tag at 0.5µg/ml (100µl/well) on the plate. Dose response curve for Anti-BDCA-2 Antibody, hFc Tag with the EC50 of 8.2ng/ml determined by ELISA. The affinity constant of 2.97 nM as determined in SPR assay (Biacore T200).
Molecular Mass	The protein has a predicted MW of 20.93 kDa. Due to glycosylation, the protein migrates to 30-40 kDa based on Tris-Bis PAGE result.
Endotoxin	Less than 1EU per µg by the LAL method.
Purity	> 95% as determined by Tris-Bis PAGE; > 90% as determined by HPLC.

 Tel: 1-631-559-9269 1-516-512-3133

 Email: info@creative-biomart.com  Fax: 1-631-938-8127

 45-1 Ramsey Road, Shirley, NY 11967, USA

Storage Valid for 12 months from date of receipt when stored at -80°C.;Recommend to aliquot the protein into smaller quantities for optimal storage. Please do not repeated freeze-thaw cycles.

Reconstitution It is recommended that sterile water be added to the vial to prepare a stock solution of 0.2 ug/ul. Centrifuge the vial at 4°C before opening to recover the entire contents.

GENE INFORMATION

Gene Name CLEC4C C-type lectin domain family 4, member C [Homo sapiens]

Official Symbol CLEC4C

Synonyms DLEC; HECL; BDCA2; CD303; CLECSF7; CLECSF11; PRO34150

Gene ID 170482

mRNA Refseq NM_203503.1

Protein Refseq NP_987099.1

MIM 606677

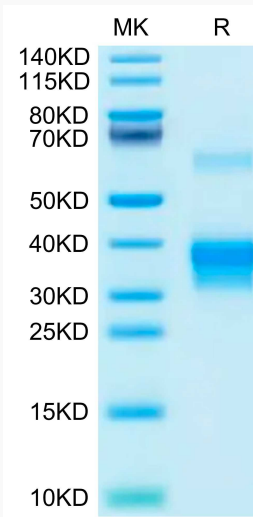
UniProt ID Q8WTT0

 Tel: 1-631-559-9269 1-516-512-3133

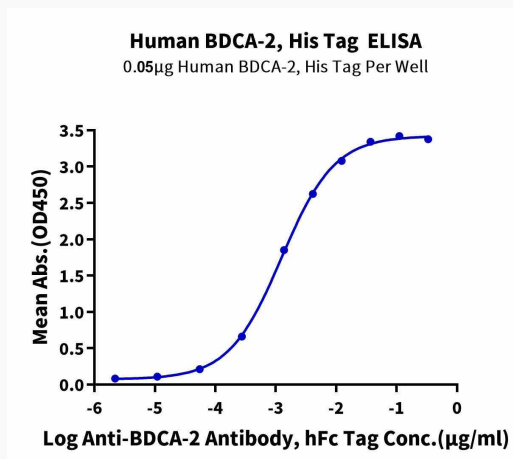
 Email: info@creative-biomart.com  Fax: 1-631-938-8127

 45-1 Ramsey Road, Shirley, NY 11967, USA

Tris-Bis PAGE



ELISA



Tel: 1-631-559-9269 1-516-512-3133

Email: info@creative-biomart.com Fax: 1-631-938-8127

45-1 Ramsey Road, Shirley, NY 11967, USA