

Recombinant Human CLEC4C Protein (45-213 aa), His-tagged

Cat. No. CLEC4C-2074H Lot. No. (See product label)

SPECIFICATION

Product Overview	Recombinant Human CLEC4C Protein (45-213 aa) is produced by Yeast expression system. This protein is fused with a 6xHis tag at the N-terminal. Protein Description: Partial.
Species	Human
Source	Yeast
ProteinLength	45-213 aa
Description	Involved in antigen-capturing. Target ligand into antigen processing and peptide-loading compartments for presentation to T-cells. May mediate potent inhibition of induction of IFN-alpha/beta expression in plasmacytoid dendritic cells. May act as a signaling receptor that activates protein-tyrosine kinases and mobilizes intracellular calcium. Does not seem to bind mannose.
Form	Tris-based buffer,50% glycerol
Molecular Mass	22.0 kDa
AA Sequence	NFMYSKTVKRLSKLREYQQYHPSLTCVMEGKDIEDWSCCPTPWTSFQSSCYFISTG MQSWTKSQKNCSVMGADLVVINTREEQDFIIQNLKRNSSYFLGLSDPGGRRHWQW VDQTPYNENVTFWHSGEPNLDERCAIINFRSSEEWGWNDIHCHVPQKSICKMKKI YI

 Tel: 1-631-559-9269 1-516-512-3133

 Email: info@creative-biomart.com  Fax: 1-631-938-8127

 45-1 Ramsey Road, Shirley, NY 11967, USA

Purity	> 90% as determined by SDS-PAGE.
Notes	Repeated freezing and thawing is not recommended. Store working aliquots at 4 centigrade for up to one week.
Storage	The shelf life is related to many factors, storage state, buffer ingredients, storage temperature and the stability of the protein itself. Generally, the shelf life of liquid form is 6 months at -20 centigrade/-80 centigrade. The shelf life of lyophilized form is 12 months at -20 centigrade/-80 centigrade.
Concentration	A hardcopy of COA with reconstitution instruction is sent along with the products.

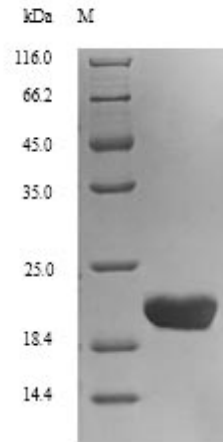
GENE INFORMATION

Gene Name	CLEC4C C-type lectin domain family 4, member C [Homo sapiens]
Official Symbol	CLEC4C
Synonyms	DLEC; HECL; BDCA2; CD303; CLECSF7; CLECSF11; PRO34150;
Gene ID	170482
mRNA Refseq	NM_203503.1
Protein Refseq	NP_987099.1
MIM	606677
UniProt ID	Q8WTT0

 Tel: 1-631-559-9269 1-516-512-3133

 Email: info@creative-biomart.com  Fax: 1-631-938-8127

 45-1 Ramsey Road, Shirley, NY 11967, USA



(Tris-Glycine gel) Discontinuous SDS-PAGE (reduced) with 5% enrichment gel and 15% separation gel.

 Tel: 1-631-559-9269 1-516-512-3133

 Email: info@creative-biomart.com  Fax: 1-631-938-8127

 45-1 Ramsey Road, Shirley, NY 11967, USA