

Recombinant Cynomolgus CLEC4C protein, hFc-tagged

Cat. No. CLEC4C-3045C Lot. No. (See product label)

SPECIFICATION

| | |
|-------------------------|--|
| Product Overview | Recombinant Cynomolgus CLEC4C protein(A0A2K5UWP4)(Tyr48-Ile212), fused with N-terminal hFc tag, was expressed in HEK293. |
| Species | Cynomolgus |
| Source | N-hFc |
| ProteinLength | Tyr48-Ile212 |
| Tag | N-hFc |
| Form | Lyophilized from 0.22µm filtered solution in PBS (pH 7.4). Normally 8% trehalose is added as protectant before lyophilization. |
| Bio-activity | Immobilized Cynomolgus BDCA-2, hFc Tag at 0.5µg/ml (100µl/well) on the plate. Dose response curve for Biotinylated Anti-BDCA-2 Antibody, hFc Tag with the EC50 of 15.5ng/ml determined by ELISA. |
| Molecular Mass | The protein has a predicted MW of 44.99 kDa. Due to glycosylation, the protein migrates to 53-63 kDa based on Tris-Bis PAGE result. |
| Endotoxin | Less than 1EU per µg by the LAL method. |
| Purity | > 95% as determined by Tris-Bis PAGE; > 95% as determined by HPLC. |

 Tel: 1-631-559-9269 1-516-512-3133

 Email: info@creative-biomart.com  Fax: 1-631-938-8127

 45-1 Ramsey Road, Shirley, NY 11967, USA

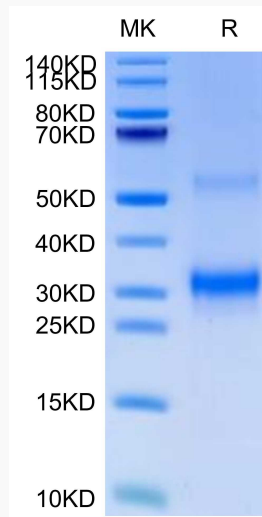
Storage

Reconstituted protein stable at -80°C for 12 months, 4°C for 1 week. Use a manual defrost freezer and avoid repeated freeze-thaw cycles.

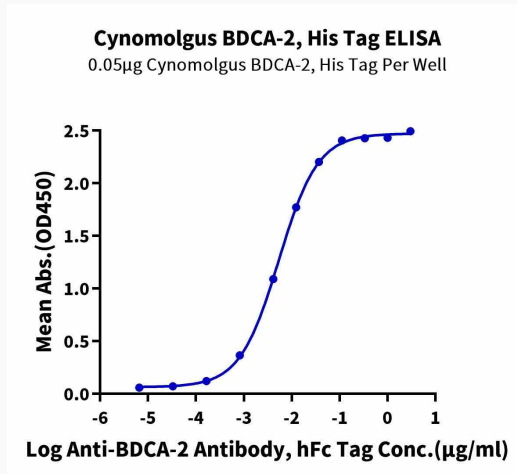
Reconstitution

Centrifuge tubes before opening. Reconstituting to a concentration more than 100 µg/ml is recommended. Dissolve the lyophilized protein in distilled water.

Tris-Bis PAGE



ELISA



Tel: 1-631-559-9269 1-516-512-3133

Email: info@creative-biomart.com Fax: 1-631-938-8127

45-1 Ramsey Road, Shirley, NY 11967, USA