

Recombinant Human CLEC4C protein, His-Myc-tagged

Cat. No. CLEC4C-6744H Lot. No. (See product label)

SPECIFICATION

Product Overview	Recombinant Human CLEC4C protein(Q8WTT0)(45-213aa), fused with N-terminal His and Myc tag, was expressed in HEK293.
Species	Human
Source	HEK293
ProteinLength	45-213aa
Tag	N-His-Myc
Form	Lyophilized from a 0.2 µm filtered 20 mM Tris-HCl, 0.5 M NaCl, 6% Trehalose, pH 8.0
Bio-activity	Measured by its binding ability in a functional ELISA. Immobilized Human CLEC4C at 2 µg/mL can bind Anti-CLEC4C recombinant antibody, the EC50 is 7.658-12.99 ng/mL.
Molecular Mass	24.1 kDa
Endotoxin	Less than 1.0 EU/ug as determined by LAL method.
Purity	Greater than 95% as determined by SDS-PAGE.
Storage	Store at -20°C/-80°C upon receipt, aliquoting is necessary for multiple use. Avoid repeated freeze-thaw cycles.

 Tel: 1-631-559-9269 1-516-512-3133

 Email: info@creative-biomart.com  Fax: 1-631-938-8127

 45-1 Ramsey Road, Shirley, NY 11967, USA

Reconstitution We recommend that this vial be briefly centrifuged prior to opening to bring the contents to the bottom. Please reconstitute protein in deionized sterile water to a concentration of 0.1-1.0 mg/mL. We recommend to add 5-50% of glycerol (final concentration) and aliquot for long-term storage at -20°C/-80°C.

AA Sequence NFMYSKTVKRLSKLREYQQYHPSLTCVMEGKDIEDWSCCPTPWTSFQSSCYFISTG
MQSWTKSQKNCSVMGADLVVINTREEQDFIIQNLKRNSSYFLGLSDPGGRRHWQW
VDQTPYNENVTFWHSGEPNLDERCAIIFRSSEEWGWNDIHCHVPQKSICKMKKI
YI

GENE INFORMATION

Gene Name [CLEC4C C-type lectin domain family 4, member C \[Homo sapiens \]](#)

Official Symbol [CLEC4C](#)

Synonyms [DLEC](#); [HECL](#); [BDCA2](#); [CD303](#); [CLECSF7](#); [CLECSF11](#); [PRO34150](#)

Gene ID [170482](#)

mRNA Refseq [NM_203503.1](#)

Protein Refseq [NP_987099.1](#)

MIM [606677](#)

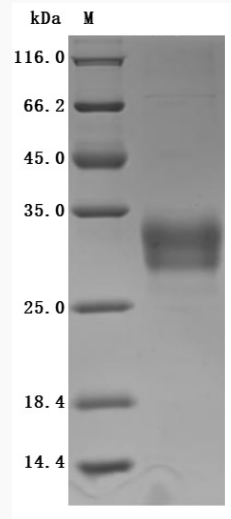
UniProt ID [Q8WTT0](#)

 Tel: 1-631-559-9269 1-516-512-3133

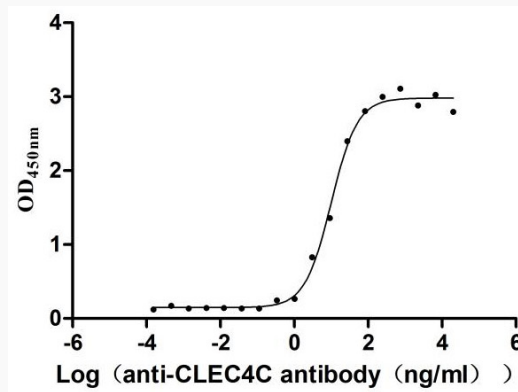
 Email: info@creative-biomart.com  Fax: 1-631-938-8127

 45-1 Ramsey Road, Shirley, NY 11967, USA

SDS-PAGE



Activity



 Tel: 1-631-559-9269 1-516-512-3133

 Email: info@creative-biomart.com  Fax: 1-631-938-8127

 45-1 Ramsey Road, Shirley, NY 11967, USA